

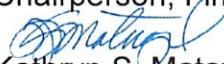


STATE OF HAWAII  
DEPARTMENT OF EDUCATION  
P.O. BOX 2360  
HONOLULU, HAWAII 96804

OFFICE OF THE SUPERINTENDENT

January 10, 2017

TO: The Honorable Grant Chun  
Chairperson, Finance and Infrastructure Committee

FROM:   
Kathryn S. Matayoshi  
Superintendent

SUBJECT: **Committee Action on Composition of Committee on Weights X**

1. RECOMMENDATION

It is recommended that the Committee on Finance and Infrastructure (Committee) approve the proposed composition of the Committee on Weights X (COW X) as specified in Attachment A.

2. RECOMMENDED EFFECTIVE DATE

Upon Board approval.

3. RECOMMENDED COMPLIANCE DATE

Upon Board approval.

4. DISCUSSION

a. Conditions leading to the recommendation

The Department of Education (Department) is preparing to convene the COW X to review the Weighted Student Formula (WSF) and recommend to the Committee the formula to be used for allocating any additional state funds that may be appropriated during the 2017 legislative session to schools beginning in School Year (SY) 2017-18, and the formula for SY 2018-19 and beyond. It is anticipated that the COW X will perform their statutorily defined duty (see Attachment B) of proposing a formula to distribute the Department's limited resources to support school operations in a manner that reflects the relative cost

of educating any student, with due consideration afforded to the goals, objectives, and strategies of the Hawaii State Department of Education & Board of Education Strategic Plan 2017-2020, Governor Ige's Blueprint for Public Education, and the State's consolidated plan for Every Student Succeeds Act for federal funding.

- b. Previous action of the Board on same or similar matter

Every year from 2005 to 2011, then with an amendment to state law every odd numbered year (2013 and 2015), the Committee has determined the composition of the COW X consistent with Hawaii Revised Statutes §302A-1303.5.

- c. Other policies affected

None.

- d. Arguments in support of the recommendation

The proposed COW X composition broadly represents the unique and diverse characteristics of schools, such as small, rural, and combination schools. It aims to give voice to schools' concerns regarding the challenges of providing students with a well-rounded curriculum, using WSF funds in addition to categorical funding and support. The proposed COW X composition strikes a balance between having diverse viewpoints of the COW with the logistical need to coordinate schedules. Approving the composition will allow the committee to complete the task over the spring and summer so that any amendments would have a chance to be incorporated into the SY 2017-18 formula, which will need to be set no later than June 2017.

- e. Arguments against the recommendation

None.

- f. Other agencies or departments of the State involved in the action

The Dean of the College of Education was consulted on and concurred with the recommended COW X composition.

- g. Possible reaction of the public, professional organizations, unions, Department staff and/or others to the recommendation

It is possible that some interest groups may prefer a different composition.

h. Educational implication

Schools and students should benefit from a COW representative of the diversity of school communities.

i. Personnel implications

None.

j. Facilities implications

None.

k. Financial implications

It is anticipated that the COW X will hold approximately five to six meetings over the spring and summer. Travel and related expenses will be covered from the WSF support budget of \$6,000 available in both Fiscal Year (FY) 17 and FY 18.

KSM:ks

Attachments

c: Budget Branch

# Committee on Weights X

Role Group	
1	Superintendent's Designee (Chair)
2	Complex Area Superintendent (Vice Chair)
3	Teacher
4	Special Education Teacher
5	School Administrative Services Assistant (HSOSA)
6	Complex Area Business Manager
7	Community Member
8	Oahu Elementary School Principal
9	Oahu Middle School Principal
10	Oahu High School Principal
11	Oahu Combo-School Principal
12	Multi-Track School Principal
13	Neighbor Island Elementary School Principal
14	Neighbor Island Middle School Principal
15	Neighbor Island High School Principal
16	Neighbor Island Combo-School Principal
17	Registrar
18	Low Enrollment School Principal
19	Rural/Isolated School Principal

## Attachment B

**§302A-1303.5 Committee on weights.** (a) There is established within the department of education the committee on weights to develop a weighted student formula pursuant to section 302A-1303.6. The committee may:

- (1) Create a list of student characteristics that will be weighted;
- (2) Create a system of weights based upon the student characteristics that may be applied to determine the relative cost of educating any student;
- (3) Determine specific student weights, including their unit value;
- (4) Determine which moneys shall be included in the amount of funds to be allocated through the weighted student formula;
- (5) Recommend a weighted student formula to the board of education;
- (6) Perform any other function that may facilitate the implementation of the weighted student formula; and
- (7) Meet not less than once every odd-numbered year, to review the weighted student formula and, if the committee deems it necessary, recommend a new weighted student formula for adoption by the board of education.

(b) The composition of the committee on weights shall be determined by the board of education based on recommendations from the superintendent of education and dean of the University of Hawaii at Manoa college of education and include principals, teachers, and other members with the appropriate professional skills, experiences, and qualifications needed to facilitate the work of the committee. The superintendent or the superintendent's designee shall chair the committee on weights.

(c) The committee on weights may form advisory subcommittees to obtain input from key stakeholders as determined necessary by the committee.

(d) The members of the committee on weights shall serve at the pleasure of the board of education and shall not be subject to section 26-34. Members of the committee on weights shall serve without compensation but shall be reimbursed for expenses, including travel expenses, necessary for the performance of their duties. [L 2004, c 51, §3; am L 2011, c 93, §2; am L 2012, c 133, §23]



## Weighted Student Formula Background

Related to: Finance and Infrastructure Committee Agenda Item:  
V.A. Committee Action on Composition of Committee on Weights X

January 10, 2017

1

### History of Weighted Student Formula

- 2003: Legislature calls for a Weighted Student Formula (WSF) Feasibility Study
- 2004 (Spring): Legislature passes Act 51 (the "Reinventing Education Act") mandating the Department implement a WSF by SY 2006-07
- 2004 (Fall): Committee on Weights (COW I) establishes 6 work groups and holds 6 committee meetings
- 2005 (Jan.): COW I submits its recommendation to the BOE
- 2006 (SY 2006-07): first year of the use of WSF by all but a few special schools (Olomana, Hawaii School for the Deaf and Blind, Niihau)
- 2016 (SY 2016-17): 11 years of using WSF for all but special schools
- 2017: COW X will be planning for SY 2017-18 (year 12)

2

## Act 51 & WSF Goals

- Support student achievement by providing fiscal:
  - **Equity** – schools with similar kinds of students receive similar resources
  - **Transparency** – allocations are based primarily on student enrollment and student characteristics and the allocation formula and allocations by school are posted to the Department's website
  - **Empowerment** – the principal, after review by the School Community Council, determines how best to use the WSF funds

3

## Weighted Student Formula

- The formula is used to determine allocations to schools based on:
  - Total student enrollment by school (general and special education)
  - Student characteristics (e.g. English Language Learners, free and reduced lunch eligibility, grade level)
  - School characteristics (e.g. geographic location)
  - Base funding by school type
- Additional funds to support school operations are allocated via non-WSF resources (e.g. SpEd, athletics, federal funds)

4

## Four WSF Allocations/Adjustments per school year

1. Tentative allocation (October, in advance of the next school year) used for Financial Plan The tentative allocation is determined by the projected enrollment count for each school.
2. Official Enrollment Count (OEC) adjustment (August) During the August allocation adjustment, schools' WSF allocation may increase if the official enrollment count is more than the projected enrollment count or decrease if the official enrollment count is less than the projected enrollment count.
3. Second WSF adjustments (October) To account for students who enroll shortly after the Official Enrollment Count date, schools with an increase in enrollment as of the second WSF enrollment count taken at the end of the first quarter (late September/early October) will receive a WSF allocation increase. The allocation adjustment will be prorated so that schools receive 75% of the school's average full-year per pupil allocation (as calculated for OEC). There is no decrease of the WSF allocation for schools that have decreases in their enrollment.
4. Third WSF adjustments (January) To account for students who transfer in at the end of the first semester, schools will receive a WSF allocation increase if it has a net increase based on the 2<sup>nd</sup> semester official enrollment count date. The allocation adjustment will be prorated so that schools receive 50% of the school's average full-year per pupil allocation (as calculated for OEC). There is no decrease of the WSF allocation for schools that have decreases in their enrollment.

5

## School Budget Process Framework

- **School budget process must be:**
  - ✓ Open
  - ✓ Democratic
  - ✓ Collaborative

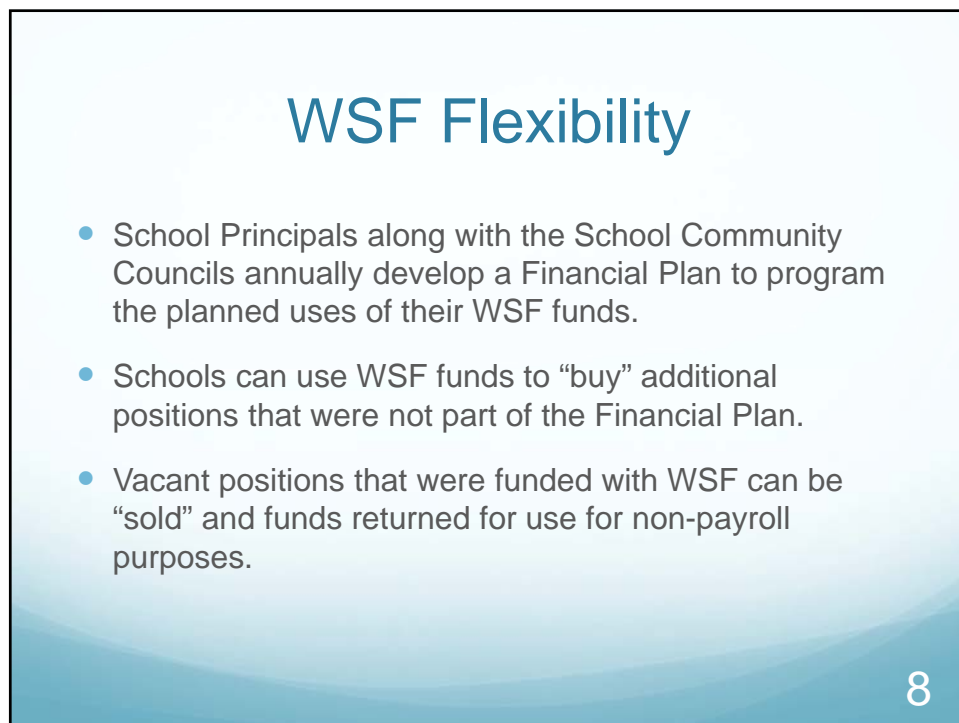
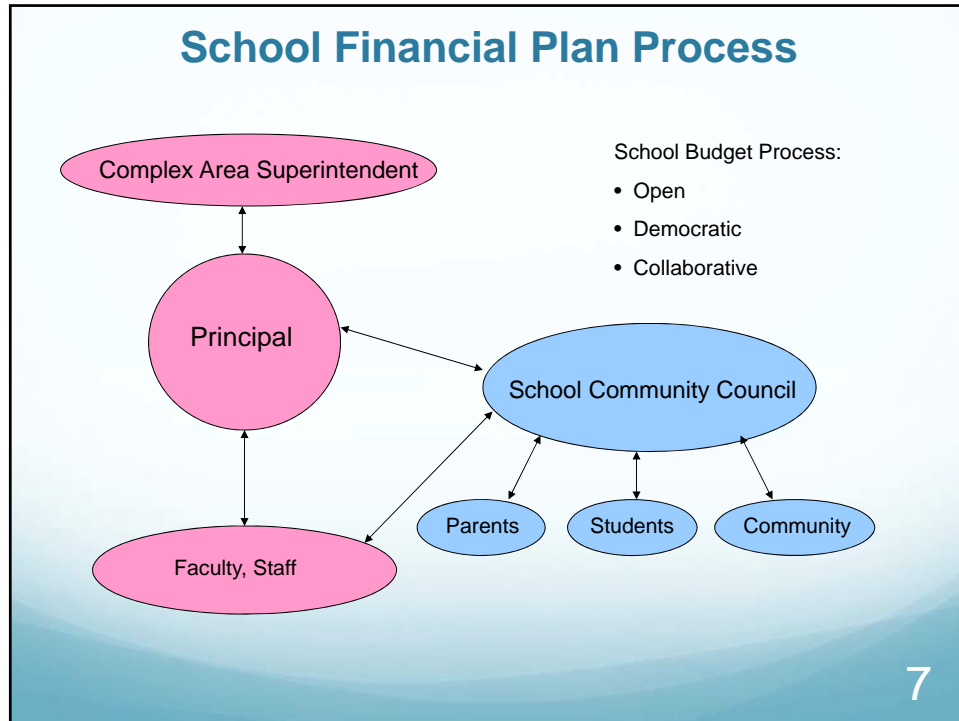
*(HSTA contract, Memorandum of Understanding)*

- **Principal prepares school academic/financial plan.**
- **School Community Council reviews the plan.**
- **Complex Area Superintendent approves the plan.**

*(Act 221, amending Act 51, Session Laws of Hawaii 2004; Section 302A-1124, Hawaii Revised Statutes)*

6





## What WSF funds are used for?

- School staff (exceptions on next slide)
- Classroom supplies
- Computers, textbooks, instructional equipment
- Telephone bills
- Custodial supplies

9

## What are non-WSF funds used for?

- Special education teachers and educational assistants
- School based behavioral health
- School food services, utilities, student transportation
- Repair and maintenance
- Athletic coaches, supplies, transportation
- Hawaiian studies
- Federal programs (e.g. Title I, IDEA)
- Afterschool Plus (A+)
- Adult Education

10

# Committee on Weights

- Volunteers from a cross section of the public school community
- The Committee's statutory assignment:
  - reviews the formula for distributing the WSF budget (student characteristics/weighting factors and weights);
  - reviews general funds which shall be distributed by the WSF; and
  - develops a recommendation for the Board of Education
- The WSF has undergone several changes over the years as the Committee, Department, and Board have worked to refine the formula to what it is today

## Details of WSF Tentative Allocation Calculation for SY2017-18

	Total PROJECTED Enrollment <sup>†</sup>	Weighting Factor	Weighted, PROJECTED Enrollment	\$ per Student	TOTAL ALLOCATION
1 Pre-K (SpEd)	1,610	1.000	1,610.00	\$4,129.51	\$ 6,648,514
2 K - 2	42,468	1.000	42,468.00	\$4,129.51	\$ 175,372,115
3 Other Elem	45,912	1.000	45,912.00	\$4,129.51	\$ 189,594,155
4 Middle	32,594	1.000	32,594.00	\$4,129.51	\$ 134,597,314
5 High	48,371	1.000	48,371.00	\$4,129.51	\$ 199,748,625
6 <b>Subtotal</b>	<b>170,955</b>		<b>170,955.00</b>		<b>\$ 705,960,723</b>
<sup>†</sup> Total Enrollment includes General Education, Special Education and Pre-K (SpEd) at a rate of 1.00 per student.					
<b>Student Characteristics</b>					
7 Grade Level Adjustment					
8 Middle	32,594	0.036	1,183.94	\$150.00	\$ 4,889,100
9 K-2 Class Size	42,468	0.150	6,370.20	\$619.43	\$ 26,305,817
10 English Language Learners (Aggregate)	18,210				\$ 13,881,053
		0.185	3,361.43	\$762.28	
11 Fully English Proficient (FEP)	6,119	0.065	396.42	\$267.54	\$ 1,637,017
12 Limited English Proficiency (LEP)	8,327	0.194	1,735.05	\$802.61	\$ 7,164,908
13 Non-English Proficient (NEP)	3,164	0.389	1,229.96	\$1,605.22	\$ 5,079,128
		0.185			\$ 13,881,053
14 Economically Disadvantaged	87,936	0.100	8,793.60	\$412.95	\$ 36,313,277
15 Gifted & Talented	5,058	0.265	1,340.24	\$1,094.32	\$ 5,534,549
16 Transiency	6,551	0.050	327.55	\$206.48	\$ 1,352,610
17 <b>Subtotal</b>			<b>21,376.96</b>		<b>\$ 88,276,406</b>
<b>School Characteristics</b>					
18 Neighbor Island	53,594	0.004	214.38	\$16.52	\$ 885,268
19 <b>Subtotal</b>			<b>214.38</b>		<b>\$ 885,268</b>
20 <b>TOTAL WEIGHTED ALLOCATION</b>	<b>170,955</b>		<b>192,546.33</b>		<b>\$ 795,122,397</b>
<b>Non-Weighted School Characteristics</b>					
Base Funding - per school based on school type (no. of schools)					
21 Elem	167		\$259,524		\$ 43,340,508
22 Elem - Multi-Track	1		\$339,524		\$ 339,524
23 Middle	36		\$406,524		\$ 14,634,864
24 Middle - Multi-Track	2		\$486,524		\$ 973,048
25 High	33		\$413,524		\$ 13,646,292
<b>Combination Schools</b>					
26 K-12	5		\$673,048		\$ 3,365,240
27 K-8	4		\$462,524		\$ 1,850,096
28 6-12	5		\$469,524		\$ 2,347,620
29 <b>Subtotal</b>	<b>253</b>				<b>\$ 80,497,192</b>
30 <b>TOTAL WSF FUNDS AVAILABLE FOR TENTATIVE ENROLLMENT ALLOCATION</b>					<b>\$ 875,619,589</b>

## Calculation of WSF Allocation

- 1<sup>st</sup> Step
  - Calculate amount needed for base funding
- 2<sup>nd</sup> Step
  - Use enrollment and student characteristics to determine weighted enrollment
  - Divide amount for allocation by weighted enrollment to get “weight of 1.0”
  - Multiply “weight of 1.0” times each school’s weighted enrollment to get weighted allocation
- Total WSF Funding
  - Add to base funding to get total allocation by school

13

## WSF Successes

1. Significant and sustained commitment to WSF
  - Improved understanding of the WSF goals and process
2. Transparent and predictable process
  - Support for engagement of school community in school planning and operations
3. WSF principals have significant flexibility and discretion over spending at their schools
4. Increased WSF funding

14

## WSF Challenges that have been Identified

1. Levels of WSF funding not sufficient to cover operations and implement innovation for all schools
2. Ensuring WSF weighting factors accurately reflect differential in costs for all schools

15

## WSF Resources:

- WSF References Database in Lotus Notes - WSF Implementation Manual, Financial Plan rubric, Financial Plan Checklist, FAQs on WSF, WSF weighting factors, average salaries
- Weighted Student Formula website – archive WSF allocation calculations, weighting factors, and enrollment and demographic data  
<http://reach.k12.hi.us/empowerment/wsf/index.htm>
- Committee on Weights website - archive of meeting agendas, minutes, and recommendations  
<http://reach.k12.hi.us/empowerment/wsf/committeonweights/index.htm>

16

# Questions?

- Amy S. Kunz, Senior Assistant Superintendent and Chief Financial Officer, Office of Fiscal Services, HIDEO; [amy\\_kunz@notes.k12.hi.us](mailto:amy_kunz@notes.k12.hi.us); 808-586-3737
- Brian Hallett, Budget Director, Office of Fiscal Services, HIDEO; [brian\\_hallett@notes.k12.hi.us](mailto:brian_hallett@notes.k12.hi.us); 808-784-6022
- Ken Kuraya, Budget Execution Administrator, Office of Fiscal Services, HIDEO; [ken\\_kuraya@notes.k12.hi.us](mailto:ken_kuraya@notes.k12.hi.us); 808-784-6031

17

ATTACHMENT - Reference

## WSF - Refinement of the Formula

	FY2017-18 (TENTATIVE)				FY2016-17				FY2015-16			
	Weighting Factors for Financial Plans				Weighting Factors for Official Enrollment				Weighting Factors for Official Enrollment			
	Total PROJECTED Enrollment	Weighting Factor	\$ per Student	TOTAL ALLOCATION	Total PROJECTED Enrollment	Weighting Factor	\$ per Student	TOTAL ALLOCATION	Total PROJECTED Enrollment	Weighting Factor	\$ per Student	TOTAL ALLOCATION
<b>Regular Education</b>												
Pre-K	1,610	1.000	\$4,129.51	\$ 6,648,514	1,573	1.000	\$3,973.45	\$ 6,250,242	1,531	1.000	\$3,870.85	\$ 5,908,268
K - 2	42,468	1.000	\$4,129.51	\$ 175,372,115	39,071	1.000	\$3,973.45	\$ 155,248,794	40,008	1.000	\$3,870.85	\$ 154,864,890
Other Elem	45,912	1.000	\$4,129.51	\$ 189,594,195	49,061	1.000	\$3,973.45	\$ 194,941,050	48,919	1.000	\$3,870.85	\$ 188,368,018
Middle	32,594	1.000	\$4,129.51	\$ 134,597,314	32,456	1.000	\$3,973.45	\$ 128,962,392	32,390	1.000	\$3,870.85	\$ 125,376,770
High	48,371	1.000	\$4,129.51	\$ 199,748,825	48,554	1.000	\$3,973.45	\$ 192,927,040	48,542	1.000	\$3,870.85	\$ 187,888,708
<b>Subtotal</b>	<b>170,955</b>			<b>\$ 705,969,723</b>	<b>170,715</b>			<b>\$ 678,328,038</b>	<b>171,390</b>			<b>\$ 663,434,654</b>
<b>Student Characteristics</b>												
Grade Level Adj												
Elem		not weighted				not weighted				not weighted		
Middle	32,594	0.036	\$150.00	\$ 4,889,100	32,456	0.036	\$150.00	\$ 4,868,400	32,390	0.039	\$150.00	\$ 4,858,500
High		not weighted				not weighted				not weighted		
K-2 Class Size	42,468	0.192	\$619.43	\$ 26,305,817	39,071	0.192	\$596.02	\$ 23,287,018	40,008	0.192	\$580.63	\$ 23,229,734
ELL	18,210			\$ 13,881,053	18,302			\$ 13,881,053	19,269			\$ 13,881,053
<b>Subtotal</b>		<b>0.188</b>		<b>\$ 13,881,053</b>		<b>0.191</b>		<b>\$ 13,881,053</b>		<b>0.188</b>		<b>\$ 13,881,053</b>
Econ. Disadv.	87,936	0.100	\$412.95	\$ 36,313,277	88,113	0.100	\$397.35	\$ 35,011,287	89,752	0.100	\$387.08	\$ 34,741,636
Gifted & Talented	5,058	0.265	\$1,094.32	\$ 5,534,549	5,074	0.265	\$1,052.97	\$ 5,343,018	5,096	0.265	\$1,025.77	\$ 5,227,112
Transiency	6,951	0.050	\$206.48	\$ 1,392,810	6,969	0.050	\$198.67	\$ 1,395,117	6,792	0.050	\$193.54	\$ 1,314,081
<b>Subtotal</b>				<b>\$ 89,276,406</b>				<b>\$ 83,696,893</b>				<b>\$ 83,292,615</b>
<b>School Characteristics</b>												
Multi-Track		not weighted				not weighted				not weighted		
Neighbor Island	53,594	0.004	\$16.52	\$ 885,268	53,632	0.004	\$15.89	\$ 852,417	53,360	0.004	\$15.48	\$ 826,194
Neighbor Island - Secondary		not weighted				not weighted				not weighted		
Geographic Isolation		not weighted				not weighted				not weighted		
<b>Subtotal</b>				<b>\$ 885,268</b>				<b>\$ 852,417</b>				<b>\$ 826,194</b>
<b>Subtotal</b>	<b>170,955</b>			<b>\$ 795,122,397</b>	<b>170,715</b>			<b>\$ 762,676,348</b>	<b>171,390</b>			<b>\$ 747,503,463</b>
<b>Non-Weighted School Characteristics</b>												
Base Funding - per school based on school type				\$ 80,497,192				\$ 80,497,192				\$ 79,757,072
Elem			\$259,524	\$ 43,340,508			\$259,524	\$ 43,340,508			\$259,524	\$ 43,340,508
Elem - Multi-Track			\$339,524	\$ 339,524			\$339,524	\$ 339,524			\$339,524	\$ 339,524
Middle			\$408,524	\$ 14,634,854			\$408,524	\$ 14,634,854			\$408,524	\$ 14,634,854
Middle - Multi-Track			\$486,524	\$ 973,048			\$486,524	\$ 973,048			\$486,524	\$ 973,048
High			\$413,524	\$ 13,646,292			\$413,524	\$ 13,646,292			\$413,524	\$ 13,646,292
Combination Schools			\$673,048	\$ 3,305,240			\$673,048	\$ 3,305,240			\$673,048	\$ 3,305,240
K-12			\$462,524	\$ 1,850,096			\$462,524	\$ 1,850,096			\$462,524	\$ 1,850,096
6-12			\$469,524	\$ 2,347,420			\$469,524	\$ 2,347,420			\$469,524	\$ 2,347,420
Multi-Track												
Adopt Admin (per school)		not applicable				not applicable				not applicable		
Geographically Isolated School		not applicable				not applicable				not applicable		
Adopt funding (per school)		not applicable				not applicable				not applicable		
School Size												
Elem		not applicable				not applicable				not applicable		
Middle		not applicable				not applicable				not applicable		
High		not applicable				not applicable				not applicable		
Combination Schools		not applicable				not applicable				not applicable		
K-8		not applicable				not applicable				not applicable		
6-12		not applicable				not applicable				not applicable		
Loss Threshold		not applicable				not applicable				not applicable		
<b>Subtotal</b>				<b>\$ 80,497,192</b>				<b>\$ 80,497,192</b>				<b>\$ 79,757,072</b>
<b>TOTAL WSF FUNDS ALLOCATED</b>				<b>\$ 875,619,589</b>				<b>\$ 843,973,540</b>				<b>\$ 827,260,535</b>

18



# WSF - Refinement of the Formula

ATTACHMENT - Reference

	FY2008-09				FY2007-08				FY2006-07			
	Weighting Factors for Official Enrollment				Weighting Factors for Official Enrollment				Weighting Factors for Official Enrollment			
	Total Official Enrollment	Weighting Factor	\$ per Student	TOTAL ALLOCATION	Total Official Enrollment	Weighting Factor	\$ per Student	TOTAL ALLOCATION	Total Official Enrollment	Weighting Factor	\$ per Student	TOTAL ALLOCATION
<b>Regular Education</b>												
Pre-K	1,577	1.000	\$ 4,150.76	\$ 6,545,750	761	1.000	\$ 4,501.87	\$ 3,423,673	748	1.000	\$ 4,288.41	\$ 3,205,586
K - 2	41,548	1.000	\$ 4,150.76	\$ 172,455,812	42,270	1.000	\$ 4,501.87	\$ 190,291,868	41,674	1.000	\$ 4,288.41	\$ 178,713,054
Other Elem	45,156	1.000	\$ 4,150.76	\$ 187,444,310	44,733	1.000	\$ 4,501.87	\$ 201,381,103	45,780	1.000	\$ 4,288.41	\$ 196,254,462
Middle	31,469	1.000	\$ 4,150.76	\$ 130,620,294	32,161	1.000	\$ 4,501.87	\$ 144,783,572	32,423	1.000	\$ 4,288.41	\$ 139,044,190
High	52,085	1.000	\$ 4,150.76	\$ 216,192,380	52,908	1.000	\$ 4,501.87	\$ 238,165,030	53,361	1.000	\$ 4,288.41	\$ 228,823,846
<b>Subtotal</b>	<b>171,838</b>			<b>\$ 713,258,445</b>	<b>172,832</b>	<b>1.000</b>	<b>\$ 4,501.87</b>	<b>\$ 778,065,246</b>	<b>173,986</b>	<b>1.000</b>	<b>\$ 4,288.41</b>	<b>\$ 746,121,158</b>
<b>Student Characteristics</b>												
<b>Grade Level Adj</b>												
Elem	86,707	0.036	\$ 143.84	\$ 12,471,936	87,002	0.036	\$ 156.01	\$ 13,573,172	87,454	0.035	\$ 148.61	\$ 12,996,682
Middle	31,469	0.100	\$ 416.53	\$ 13,107,783	32,161	0.100	\$ 451.77	\$ 14,529,181	32,423	0.100	\$ 430.35	\$ 13,953,228
High	52,085	0.000	\$ 0.00	\$ -	52,908	0.000	\$ 0.00	\$ -	53,361	0.000	\$ 0.00	\$ -
K-2 Class Size	41,546	0.150	\$ 622.81	\$ 25,868,200	42,270	0.150	\$ 675.28	\$ 28,543,780	41,674	0.150	\$ 643.26	\$ 26,806,958
ELL	15,913	0.230	\$ 956.01	\$ 15,212,776	16,004	0.211	\$ 850.54	\$ 13,621,776	14,920	0.203	\$ 881.42	\$ 13,143,219
<b>Specialization</b>	<b>0.230</b>			<b>\$ 15,212,776</b>	<b>0.211</b>			<b>\$ 13,621,776</b>	<b>0.203</b>			<b>\$ 13,143,219</b>
Econ. Disadv.	70,967	0.100	\$ 415.08	\$ 29,456,981	71,868	0.100	\$ 450.19	\$ 32,354,008	73,330	0.100	\$ 428.84	\$ 31,447,041
Gifted & Talented		not weighted				not weighted				not weighted		
Transiency	14,659	0.050	\$ 207.54	\$ 3,042,310	14,170	0.050	\$ 225.09	\$ 3,189,519	14,701	0.025	\$ 107.21	\$ 1,576,139
<b>Subtotal</b>				<b>\$ 99,159,985</b>				<b>\$ 107,402,436</b>				<b>\$ 101,423,266</b>
<b>School Characteristics</b>												
Multi-Track	5,627	0.005	\$ 20.75	\$ 116,780	5,900	0.005	\$ 22.51	\$ 132,805	6,088	0.005	\$ 21.44	\$ 130,528
Neighbor Island	53,987	0.005	\$ 20.75	\$ 1,120,230		not weighted				not weighted		
Neighbor Island - Secondary		not weighted				not weighted				not weighted		
Geographic Isolation	1,822	0.005	\$ 20.75	\$ 37,807	1,847	0.005	\$ 22.51	\$ 41,575	1,896	0.005	\$ 21.44	\$ 40,654
<b>Subtotal</b>				<b>\$ 1,274,797</b>				<b>\$ 174,380</b>				<b>\$ 171,183</b>
				<b>\$ 813,693,227</b>				<b>\$ 885,642,062</b>				<b>\$ 847,715,607</b>
<b>Non-Weighted School Characteristic</b>												
<b>Base Funding - per school based on school type</b>				<b>\$ 20,021,050</b>				<b>\$ 20,042,174</b>				
Elem	\$63,300			\$10,444,000	\$63,300			\$10,571,100	not applicable			
Elem - Multi-Track	\$63,300			\$106,600	\$63,300			\$106,600	not applicable			
Middle	\$84,350			\$2,952,250	\$84,350			\$2,952,250	not applicable			
Middle - Multi-Track	\$84,350			\$168,700	\$84,350			\$168,700	not applicable			
High	\$126,080			\$4,777,140	\$126,080			\$4,777,140	not applicable			
Combination Schools				\$886,080				\$886,080	not applicable			
K-12	\$147,680			\$207,380	\$147,680			\$207,380	not applicable			
K-8	\$105,476			\$738,400	\$105,476			\$738,400	not applicable			
6-12	\$147,680			\$444,202	\$147,680			\$444,202	not applicable			
Multi-Track				\$444,202				\$444,202	not applicable			
Adm'l Admin (per school)	4	\$111,050.50		\$444,202	4	\$111,050.50		\$444,202	4	\$111,050.50		\$444,202
Geographically Isolated School		not applicable				not applicable				not applicable		
Adm'l Fundng (per school)				\$ 58,938,277				\$ 51,182,400				\$ 4,862,400
<b>School Size</b>		<b>Enrollment Range</b>		<b>varies</b>		<b>Enrollment Range</b>		<b>varies</b>		<b>Enrollment Range</b>		<b>varies</b>
Elem		varies (250, 350, 450, 650)		\$ 25,918,656		400 - 800	\$ 400.00	\$ 1,625,600		400 - 800	\$ 400.00	\$ 1,628,000
Middle		0 - 850	\$ -3,2750x + 2800.00	\$ 9,897,561		700 - 1,100	\$ 400.00	\$ 714,800		700 - 1,100	\$ 400.00	\$ 410,800
High		0 - 1,650	\$ -1,1165x + 1889.70	\$ 13,712,344		1,150 - 1,850	\$ 400.00	\$ 572,800		1,150 - 1,850	\$ 400.00	\$ 725,400
Combination Schools		0 - 1,650	\$ -1,1165x + 1889.70	\$ 3,130,789		1,150 - 1,850	\$ 400.00	\$ 516,800		1,150 - 1,850	\$ 400.00	\$ 1,864,800
K-12		0 - 850	\$ -3,2750x + 2800.00	\$ 2,788,619		700 - 1,100	\$ 400.00	\$ 1,696,200		700 - 1,100	\$ 400.00	\$ 609,200
K-8		0 - 1,650	\$ -1,1165x + 1889.70	\$ 3,080,507		1,150 - 1,850	\$ 400.00	\$ 516,800		1,150 - 1,850	\$ 400.00	\$ 486,000
6-12		0 - 1,650	\$ -1,1165x + 1889.70	\$ 14,693,776		not applicable				not applicable		
Loss Threshold	4.00%			\$ 4,097,305				\$ 25,678,776				\$ 5,306,602
<b>Subtotal</b>				<b>\$ 99,159,985</b>				<b>\$ 107,402,436</b>				<b>\$ 101,423,266</b>
<b>TOTAL WSF FUNDS ALLOCATED</b>				<b>\$ 807,780,332</b>				<b>\$ 811,500,838</b>				<b>\$ 853,652,209</b>