

Hawai'i Keiki Healthy & Ready to Learn

Mary Boland, DrPH, RN, FAAN
Dean, UH Mānoa Nursing

**Hawai'i State Board of Education
General Business Meeting
January 10, 2017**

Hawai'i Keiki: Healthy & Ready to Learn



Educational Attainment: The Best Indicator of Future Health

- People with more education have better health than those with less education
- US Public Health Service recommends interventions to increase HS completion to improve future public health equity
- UH Mānoa Nursing is partnering to ensure students are career ready and benefit from higher education
- Aligns with *Strategic Plan 2017-2020*, Goal 1: Student Success, addressing “students physical, mental and social-emotional health through school programs and partnerships with families, community organizations, and agencies that support student’s well-being”

Hawai'i Keiki: Healthy & Ready to Learn



School Health Services

- Intervene with actual and potential problems
- First aid, emergency management
- Screening and immunizations
- Oral health to prevent caries (cavities)
- Assessment and planning for the management of chronic conditions
- Keeping keiki in school by coordinating with community resources (PHNs, primary care providers, support services)

Hawai'i Keiki: Healthy & Ready to Learn

UH Mānoa Nursing Shall:

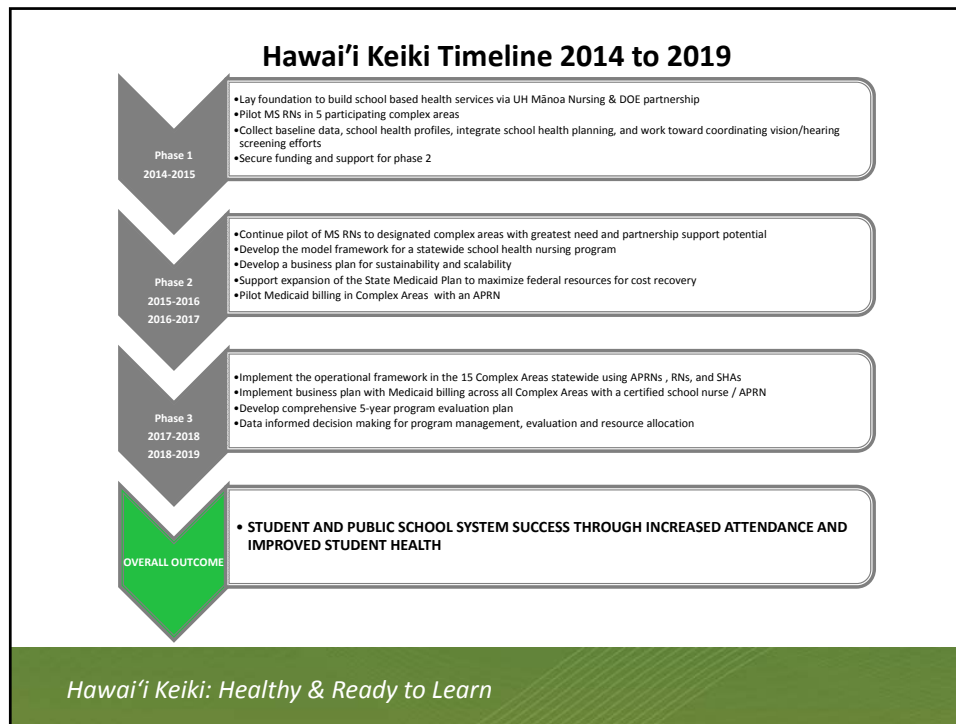
- Design a program to improve the access and quality of health services available to school children in the school communities by coordinating and expanding existing efforts of the partners
- Partner with each Complex Area Superintendent to create a school based health services plan that reflects the specific needs of the Complex Area (considering student demographics, staffing patterns, available support services, and health care access within the community)
- Provide direct health services by placing Advanced Practice Registered Nurses (APRN) in schools designated by DOE

Hawai'i Keiki: Healthy & Ready to Learn

Complex Area

- Health resource for CAS/Complex Area
- Wellness committees
- Screenings
- Resource matrix
- SHA meetings
- Part of community meetings (i.e., CCC)
- Flu clinics
- Part of complex area health projects/initiatives
- Coordinate quarterly meeting between CAS/PHN sup/HK
- Health update segment at principals meetings

Hawai'i Keiki: Healthy & Ready to Learn



Hawai'i Keiki: Where to from here??

- 2017 Legislative Session request to expand the program statewide to 15 Complex Areas (attached)
- Continue to refine the model as schools elect to purchase nursing services from us
- Conduct initial evaluation of the program to date
- Continue to advocate for MedQUEST coverage of school based services

Hawai'i Keiki: Healthy & Ready to Learn

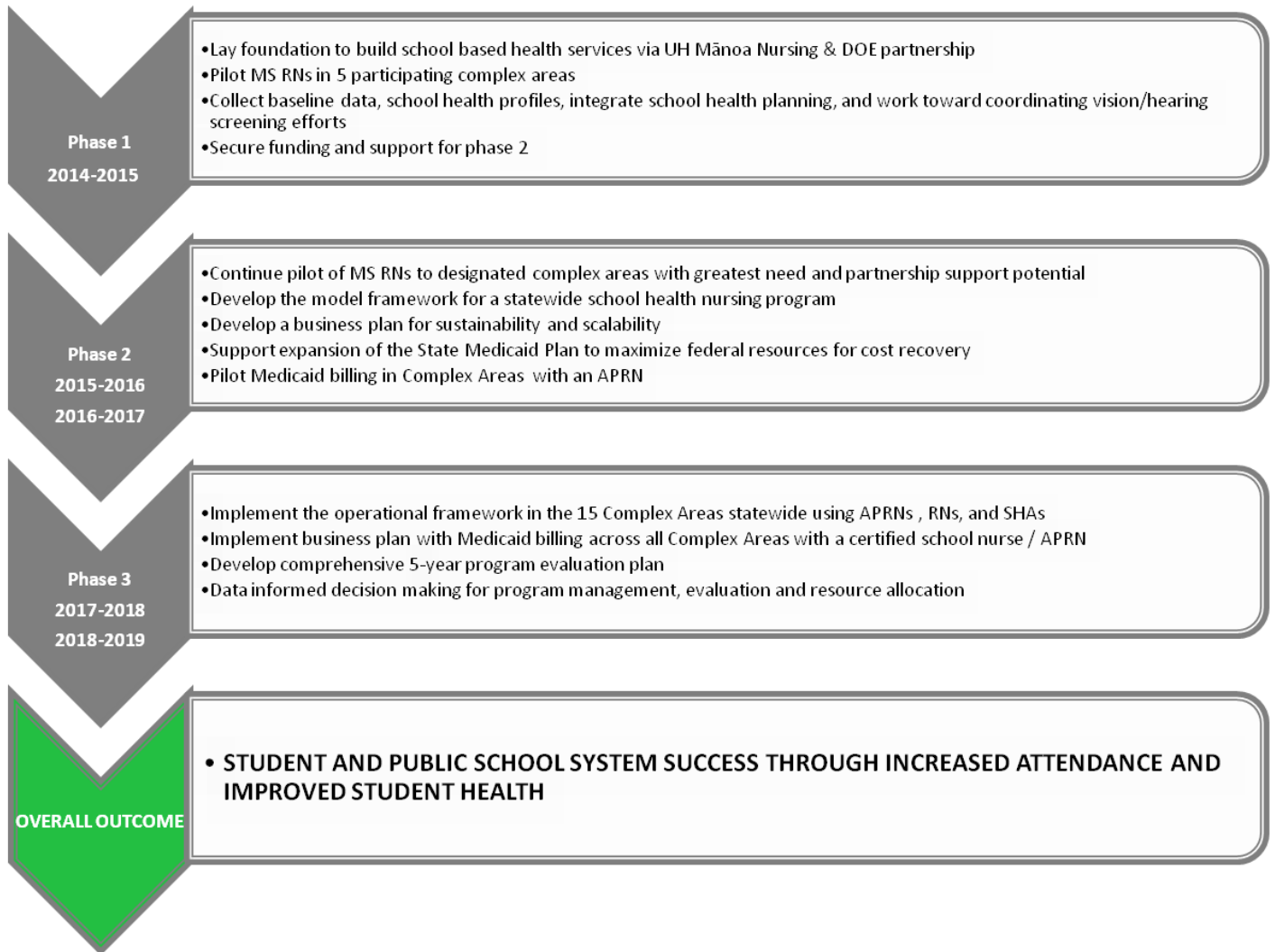
Close up of Whole School, Whole Community, Whole Child Model (Slide 3)

WHOLE SCHOOL, WHOLE COMMUNITY, WHOLE CHILD

A collaborative approach to learning and health



Close up of Hawai'i Keiki Timeline 2014 to 2019 (Slide 7)





CONNECTING HEALTH, SCHOOL ATTENDANCE, AND LEARNING

Overview

Academic achievement from kindergarten to high school graduation and postsecondary enrollment are all highly sensitive to absenteeism and unmet health needs. Missing even some school can have negative effects, especially for students who live in or near poverty. Students who regularly attend school have higher GPAs, standardized test scores, and graduation rates. Chronic absenteeism, generally defined as missing 10 percent or more days during the 180 day school year, is of greatest concern. In Hawai'i, 5% of DOE students are absent on an average day – and the percentages vary greatly by school.

Program: DOE & UH Mānoa Nursing

In 2014, the DOE established *Hawai'i Keiki Healthy and Ready to Learn*, a funded partnership with the University of Hawai'i Mānoa School of Nursing and Dental Hygiene. Act 139 (2015) appropriated \$2 million to support the partnership (2015-2017) and the program obtained matching funding from Hawai'i Community Foundation, Harold K. L. Castle Foundation, HMSA Foundation, Kaiser Permanente Hawai'i and The Queen's Medical Center to:

- Engage the healthcare industry in supporting DOE to meet health needs using schools as a delivery site
- Develop school based nurse practitioner (APRN) delivered services in Complex Areas with high numbers of Title I eligible/MedQUEST students
- Increase access to nursing and health related career development to DOE students and schools
- Support state policy development on improving health in schools

Policy Impact

- Convened meetings of key stakeholders in health, human services, and education in 2016
- Created the venue for public and private engagement, and identified priority action areas: data sharing, funding for sustainability, and coordination within and across sectors
- Launched an electronic web based school health record system that is capturing data to create school health profiles and ensure student health records are current (FERPA and HIPAA compliant)
- Developed a business plan to inform program sustainability
- Identified the elements of Essential School Based Health Services
- Convened meetings with private health care insurers to discuss reimbursement for school-based services

Direct Services

- 7 Complex Areas have a nurse dedicated to organizing and delivering health services
- 10 schools have benefited from:
 - Expanded wellness programs
 - Evidence based vision screening with glasses to children who need them
 - Sports physicals provided as needed
 - Better attendance rates through decreased early dismissal rates
 - Real time school health profile to principal and health care providers
- 1 Complex Area (Waianae/Nanakuli) has built a resource efficient model of 1 APRN with 4 RNs and SHAs covering all the elementary schools in the CA
- 4 nurses nationally certified as a School Nurse as of June 2016
- MedQUEST plans billed and paid for APRN school based services beginning in September 2016

2017-2019 Legislative Request

- Continue and expand the program with an appropriation of \$3.8 million annually to:
 - Implement Hawai'i Keiki statewide in 15 DOE Complex Areas and pilot in 1 Charter School
 - Build a school based oral health prevention services and sealant program
 - Fund school health services coordinator positions in Department of Health and MedQuest (DHS)



NURSING

UNIVERSITY of HAWAII at MĀNOA
Leadership · Excellence · Innovation

UH Mānoa Nursing 2016 Fact Sheet

Mary G. Boland
DrPH, RN, FAAN
Dean & Professor

Vision

The leader in nursing education and research in Hawai'i with outreach to Asia and the Pacific Basin.

Mission

To provide an innovative, caring and multicultural environment in which faculty, students and staff work together to generate and transmit knowledge, wisdom and values to promote quality of life and health for present and future generations. To better reflect Hawai'i's unique cultural diversity and heritage, UH Mānoa Nursing is committed to increasing the representation of Native Hawaiian and other underserved people in all nursing programs.

Contact

UH Mānoa Nursing
2528 McCarthy Mall
Webster Hall 402
Honolulu, HI 96822
(808) 956-8522

nursing@hawaii.edu
www.nursing.hawaii.edu

Nationally Ranked

- U.S. News and World Report Magazine ranked UH Mānoa Nursing for the Best Graduate Nursing Schools, Best Online Graduate Nursing Programs and Best Online Doctor of Nursing Practice (DNP) Degree.

Programs and Enrollment (Spring 2016)

- Bachelor of Science (BS) degree in Nursing: 233
- Graduate Entry Program in Nursing (pre-licensure year): 55
- Master of Science (MS) degree in Nursing: 95
- Doctor of Nursing Practice (DNP): 29
- Doctor of Philosophy (PhD) in Nursing: 36

Gender & Residency

- Undergraduate Students
 - 21% men / 79% women
 - 91% Hawai'i residents
- Graduate Students
 - 14% men / 86% women
 - 80% Hawai'i residents

Scholarship & Research

- \$322,312 in scholarships, awards, and grants were awarded to 128 UH Mānoa Nursing students in academic year 2014-15.
- \$350,000 for Advanced Education Nursing Traineeships provide tuition for 16 nurse practitioner students to work in medically underserved areas in rural communities following graduation.
- \$1.4 million in research and extramural funding.

Community

- 200+ affiliating agencies provide clinical learning experiences for students.
- Students provide more than 100,000 statewide service hours per year.
- The Translational Health Science Simulation Center provides training for students, faculty, and practicing care providers to improve quality and patient safety.
- The Hawai'i Keiki school health program provides services statewide by placing registered nurses in selected public schools.
- The Veterans to Nurses Program helps U.S. veterans decrease time to graduation and a BS nursing degree through academic and support services.
- The 'IKE AO PONO Program assists Native Hawaiian and Pacific Island students achieve academic success by providing counseling, tutoring, mentoring, scholarship, and cultural opportunities.

