



STATE OF HAWAII  
DEPARTMENT OF EDUCATION  
P. O. BOX 2360  
HONOLULU, HAWAII 96804

OFFICE OF THE SUPERINTENDENT

August 1, 2017

TO: The Honorable Margaret Cox  
Chairperson, Student Achievement Committee

FROM: Dr. Christina M. Kishimoto  
Superintendent

*for* 

SUBJECT: **Presentation on School Health Section and Services Provided by the  
Department of Education**

1. DESCRIPTION

The Department's Office of Curriculum, Instruction, and Student Support (OCISS) will share information regarding the recently formed School Health Section, including school-based health services provided to students, and the community partnerships being cultivated as part of a statewide system of school-based health care.

2. UPDATE

OCISS will provide a school-based health services update, including the expansion of the Hawaii Keiki program to all complex areas, school-based health centers, and coordinated school health partnerships.

CMK:lsr  
Attachment

c: Office of Curriculum, Instruction and Student Support



# Presentation on School Health Section and Services Provided by the Department of Education

Board of Education  
Student Achievement Committee  
August 1, 2017

OFFICE OF CURRICULUM, INSTRUCTION AND STUDENT SUPPORT  
HawaiiPublicSchools.org

**OCISS**



## Agenda

- Preamble: Healthy students are better on all levels of academic achievement: academic performance, education behavior, cognitive skills and attitudes. All students deserve the opportunity to be healthy and successful (Centers for Disease Control and Prevention, 2014).
- School Health Services
  - Hawai'i Keiki Program
  - HealthOffice Anywhere (data software)
  - School-Based Health Centers
  - Partnerships: State and community agencies

OFFICE OF CURRICULUM, INSTRUCTION AND STUDENT SUPPORT  
HawaiiPublicSchools.org

**OCISS**



# Health and Academic Achievement

## THE DRIVER:

### DOE Strategic Plan 2017-2020

#### Vision

Hawai'i's students are educated, **healthy**, and joyful lifelong learners who contribute positively to our community and global society.

**Goal 1:** Student Success

**Objective 2:** Whole Child

**Strategy 2b:** Address students' **physical, mental, and behavioral health** through school programs and **partnerships** with families, community organizations, and government agencies that support students' **well-being**.



OFFICE OF CURRICULUM, INSTRUCTION AND STUDENT SUPPORT  
HawaiiPublicSchools.org

OCISS



# Health and Academic Achievement

## Nā Hopena A'ō (HĀ)

### Strengthened Sense of Total Well-being:

I learn about and practice a **healthy lifestyle**. A sense of Total Well-being is demonstrated by making choices that improve the mind, body, heart and spirit. I am able to meet the demands of school and life while contributing to the well-being of family, 'āina, community and world.



OFFICE OF CURRICULUM, INSTRUCTION AND STUDENT SUPPORT  
HawaiiPublicSchools.org

OCISS



## Chronic Absenteeism

(Absent at least 15 days during the school year)

### 2016-17 School Year

All students statewide

**20.05%**

**33,709 students**

OFFICE OF CURRICULUM, INSTRUCTION AND STUDENT SUPPORT  
HawaiiPublicSchools.org

**OCISS**



## Hypothesis

- Many of these students are chronically absent because their health needs are largely *not* met.

OFFICE OF CURRICULUM, INSTRUCTION AND STUDENT SUPPORT  
HawaiiPublicSchools.org

**OCISS**



# Theory of Action

- If chronic absenteeism is decreased...
- Then academic engagement and achievement will increase. *How?*
  - More students attending school regularly.
  - School-based health centers and health rooms providing direct health services to students (DOH PHNs, Hawai'i Keiki Nurses, School Health Assistants).
  - Standards-based health education curriculum being delivered, which helps students make better choices for their overall health and well-being.

OFFICE OF CURRICULUM, INSTRUCTION AND STUDENT SUPPORT  
HawaiiPublicSchools.org

**OCISS**



**HAWAI'I KEIKI**  
*Healthy and Ready to Learn*  
UH Mānoa Nursing with Hawai'i Department of Education



NURSING  
UNIVERSITY OF HAWAII  
[www.hawaiikeiki.com](http://www.hawaiikeiki.com)



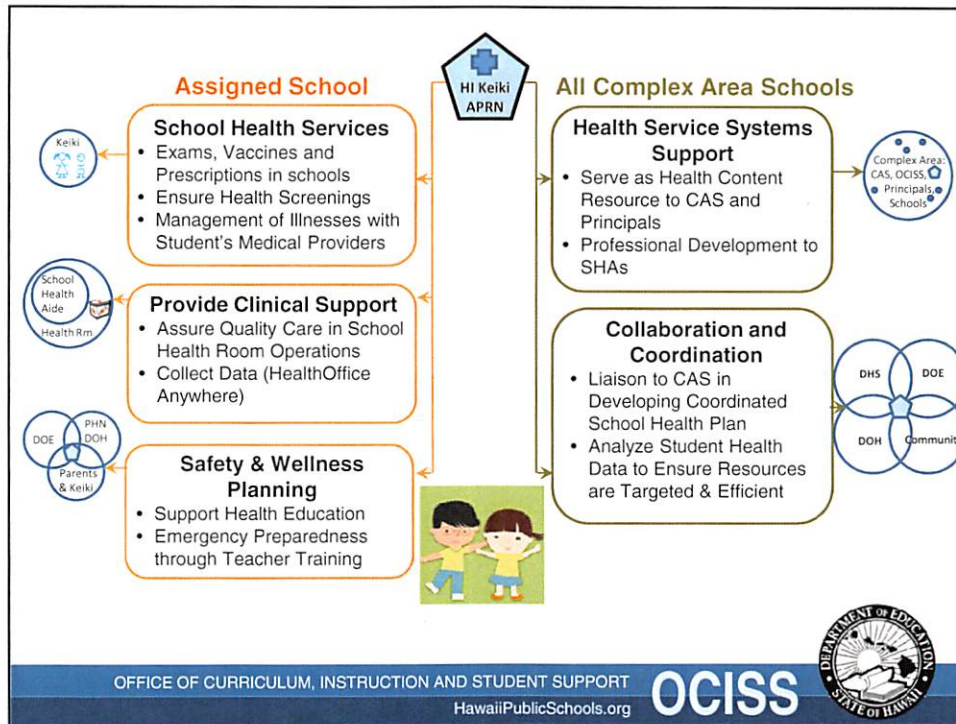
## **Advanced Practice Registered Nurses (APRNs) Serving DOE Schools**

- Reduce health-related chronic absenteeism and time spent in health rooms.
- Enhance wellness in the school environment and community.
- Promote optimal student health through school-based health care.
  - Preventive health screening (vision, hearing, dental)
  - Manage acute illnesses and chronic health conditions
- Collaborate with community partners for coordinated school health programs and services.

OFFICE OF CURRICULUM, INSTRUCTION AND STUDENT SUPPORT  
HawaiiPublicSchools.org

**OCISS**





**Hawai'i Keiki**  
Healthy & Ready to Learn  
UH Manoa Nursing with Hawaii Department of Education

Phase 3: Expansion to 8 New Complex Areas			
School Year	New APRNs	New Schools	New Keiki
2017-18	8	150	100,000+

**Hawai'i Keiki expanding state-wide to all 15 Complex Areas for 2017-18 SY:**

- Statewide public school system support: 256 schools, approximately 180,000 students
- APRNs: One assigned to each Complex Area (15), 5 additional at Nānākuli-Wai'anae CA schools, and 1 additional at Farrington High School, totaling 21 providing school-based health care services.

**Support and consultation to OCISS School Health Section for:**

- Expanding HealthOffice Anywhere® to all 256 schools
- Continued collaboration and development with community organizations

Logos: DHS, DOE, Community, HI Keiki APRN, Complex Area CAS, OCISS, Principals Schools, DEPARTMENT OF EDUCATION STATE OF HAWAII

OFFICE OF CURRICULUM, INSTRUCTION AND STUDENT SUPPORT  
HawaiiPublicSchools.org **OCISS** DEPARTMENT OF EDUCATION STATE OF HAWAII



## HealthOffice® Anywhere

Student Electronic Medical Record (EMR) Software for Schools

- Report Detailed Information About Every Student Encounter in Health Rooms
- Early Identification of Students Frequenting Health Rooms or Being Sent Home
- Provides school nurses easy access to SHA records for supervision purposes
- Physical Exam and Immunization Records never lost in transfer between schools

### Pilot (2016-2017 School Year)

- 12 Schools with Hawai'i Keiki Nurse included in pilot, 16 SHA and Substitute SHAs
- 1,085 medical conditions logged on 928 students
- 26,594 visits to the health room and 1,216 medication events for 5,867 students
- Visit disposition: 85% returned to class; 15% sent home or remained in health room

### Understanding and Intervening in Health-Related Chronic Absenteeism

- Enhanced monitoring of students with conditions and time spent in health rooms
- Improved follow-up after being sent home and tracking response to interventions

OFFICE OF CURRICULUM, INSTRUCTION AND STUDENT SUPPORT  
HawaiiPublicSchools.org

OCISS



## Hawai'i Keiki Collaborative Projects and Partnerships



### Oral Health Screening and Dental Sealants:

Grant-funded project providing screening and dental sealants in collaboration with DOH and UH Mānoa School of Nursing and Dental Hygiene

### Vision Screening and Eye Health Partnership:

Expanding vision screening in schools and school-based follow-up services (e.g., providing glasses) in partnerships with Project Vision Hawai'i, Vision To Learn, Lions Clubs, Vision Quest 20/20 and private foundation funders

OFFICE OF CURRICULUM, INSTRUCTION AND STUDENT SUPPORT  
HawaiiPublicSchools.org

OCISS



## Hawai'i Keiki Collaborative Projects and Partnerships



### Coordinating Care with Health Care Providers and Organizations:

The Queen's Medical Center and Health System, Castle Medical Center, Kapi'olani Medical Center for Women and Children, Wilcox Medical Center, Kaua'i Medical Clinic, Federally Qualified Health Centers (FQHCs), American Academy of Pediatrics – Hawai'i Chapter, and National Association of Pediatric Nurse Practitioners

OFFICE OF CURRICULUM, INSTRUCTION AND STUDENT SUPPORT  
HawaiiPublicSchools.org

OCISS



## DOE ↔ DOH Partnership



### • Health Services to DOE Schools:

- DOH Public Health Nurses (PHNs) assigned to all Complex Areas, providing oversight for all public and charter schools.
- They support the well-being of students, including management of their health conditions to increase attendance in schools.

### • Coordinated School Health Services:

- DOH Public Health Nursing Branch meets monthly with DOE (School Health Section) and Hawai'i Keiki Program to coordinate school health services.

### • Communication:

- DOH provides communication to DOE regarding health related information such as outbreaks (e.g., Hepatitis A, Mumps, etc.), Tuberculosis investigation, revisions to health requirements, etc.

OFFICE OF CURRICULUM, INSTRUCTION AND STUDENT SUPPORT  
HawaiiPublicSchools.org

OCISS





## Waianae Coast Comprehensive Health Center School-Based Health Center Waianae High and Intermediate Schools



- Access: Primary care and behavioral health services are available to ALL students with parental/guardian consent.
- Staffing: 3 rotating APRN's, 1 clinical psychologist, 1 health educator, 2 clinic managers and one clinical director.
- Sustainability: Encounters are billed for. Most students are already WCCHC patients – SBHC is an extension of their medical home. A grant covers costs of patients we are unable to bill.
- Strengths: Community engagement, especially incorporating the voices of students; direct link to behavioral health; electronic health records with access to students' past medical history; coordination of care.
- Goal: Improve chronic absenteeism by providing primary care and behavioral health services when needed and allowing students to return to class.
- Ultimate goal: Improve health literacy of adolescents by focusing on prevention; health education; early intervention and risk reduction.

OFFICE OF CURRICULUM, INSTRUCTION AND STUDENT SUPPORT  
HawaiiPublicSchools.org

OCISS



## Chronic Absenteeism Impact at schools 2016-17 SY

- **Wai'anae High School**
  - 46.41%
  - 808 students (out of 1,741)
- **Wai'anae Intermediate School**
  - 48.77%
  - 418 students (out of 857)

❖ The following slide shows data collected which illustrates how school-based health centers at both of these schools are helping address the problem of chronic absenteeism.

OFFICE OF CURRICULUM, INSTRUCTION AND STUDENT SUPPORT  
HawaiiPublicSchools.org

OCISS



WAIAANAE COAST COMPREHENSIVE HEALTH CENTER  
 School Based Health Centers - August 1, 2016 - May 26, 2017



RESULTS: Aug 1, 2016 – May 26, 2017	Waianae High School	Waianae Intermediate School	Total
Students Requesting Medical Care	1435	1080	2515
Students Treated	1302 (91%)	990 (92%)	2292 (91%)
Students Returned to Class After Treatment	1267 (97%)	854 (86%)	2121 (93%)
Primary Care Diagnoses	<i>Sports and School Physicals; Acute conditions – e.g. ear infections; Strep throat, asthma exacerbation; urinary tract infection; menstrual cramps; rashes; diarrhea/vomiting; appendicitis; seizure Orthopedic conditions and injuries – e.g. sprains; strains; fractures; lacerations; abrasions; concussion.</i>	Same as in WHS	
Behavioral Health Visits Jan 9, 2017 - May 26, 2017	209	143	352
Behavioral Health Diagnoses	<i>Adjustment disorder, Depression; Anxiety; PTSD; Eating disorders</i>	Same as in WHS	

OFFICE OF CURRICULUM, INSTRUCTION AND STUDENT SUPPORT  
 HawaiiPublicSchools.org

**OCISS**



## Sound Body, Thriving Mind, Promising Future

