

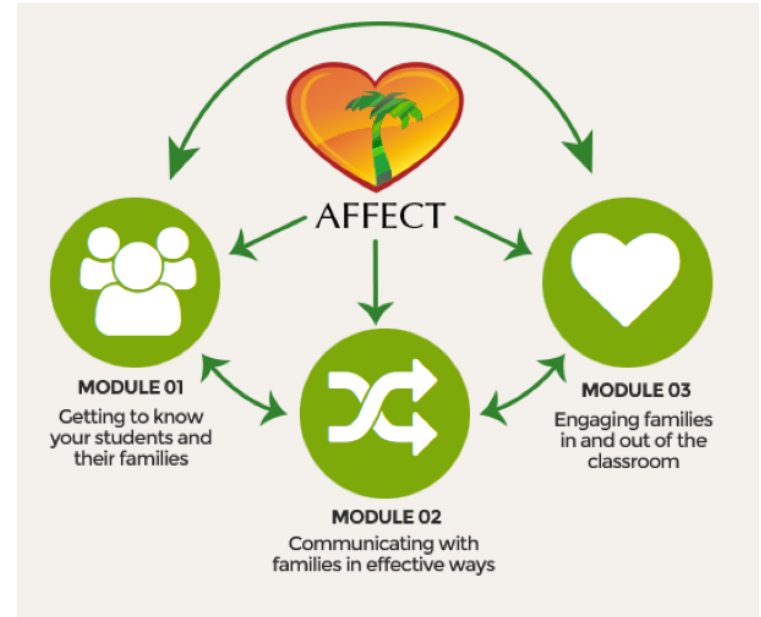
STUDENT ACHIEVEMENT COMMITTEE

Meeting Date: March 1, 2016

Presentation on University of Hawaii's online educational modules to promote Family, School and Community Partnerships

Katherine Ratliffe, Associate Professor, Dept. of Educational Psychology, COE, UH Manoa

Kevin Traynor, Graduate Student, Curriculum Studies, COE, UH Manoa



AFFECT

**ACTIVATING EDUCATORS FOCUS ON
FAMILY ENGAGEMENT**

AS CENTRAL TO TEACHING

<https://affect.coe.hawaii.edu/>

Overview

- Funding by The Learning Coalition in 2012
- Development of Three Pre-service Modules
 - Getting to know your students and their families
 - Communicating with families in effective ways
 - Engaging families in and out of the classroom
- Research
 - Theoretical perspectives and conceptual frameworks
 - Teacher perspectives on family partnerships
 - Family perspectives on family-school partnerships
- Expansion into inservice development
 - Partnerships with TLC and HSTA to deliver PD courses (2016)
 - Upgrading of three modules to promote inservice training for teachers
 - Development of fourth module focused on special populations (special education, multilingual learners/immigrant populations, homeless and indigent, military, indigenous learners)
 - Continuing research on family partnerships

Overview of Modules 1-3

- Module 1: Getting to know families

TOPICS

1. THE IMPORTANCE OF STUDENT & FAMILY BACKGROUND

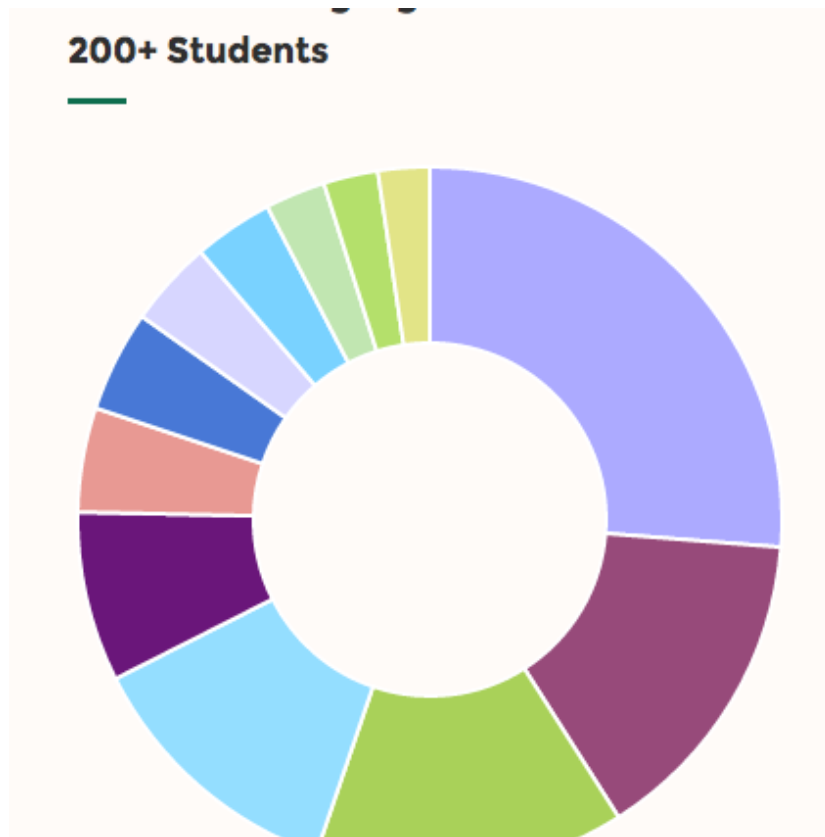
* **2. CULTURAL & LINGUISTIC DIVERSITY**

3. CULTURAL & LINGUISTIC RESPONSIVENESS

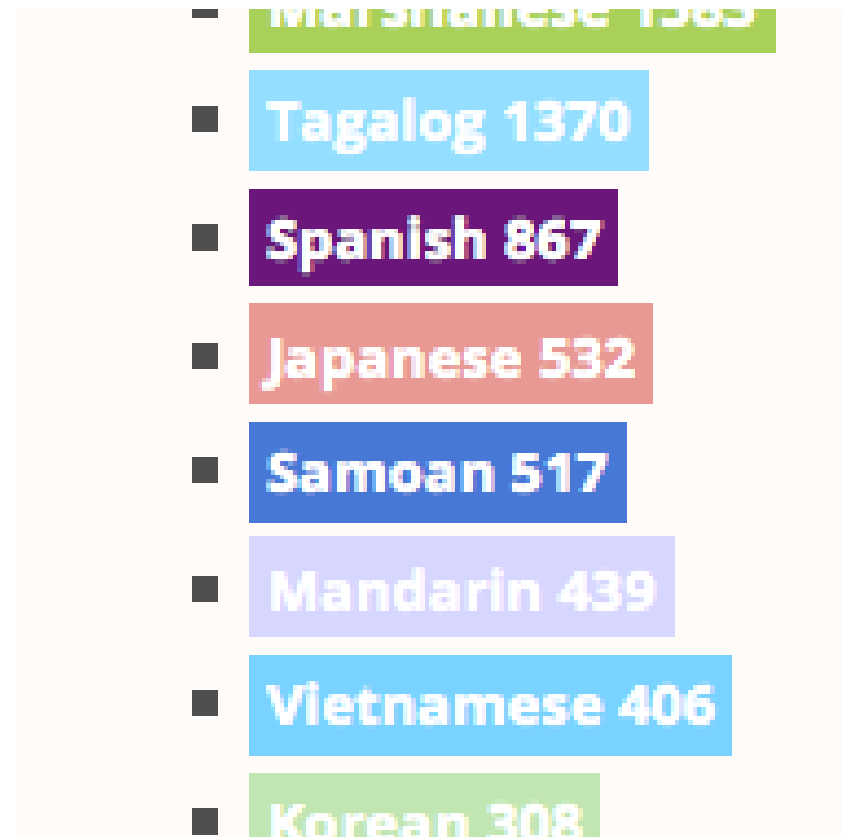
4. INSTRUCTION THAT RESPONDS TO AND FLOURISHES WITH THE CULTURAL AND LINGUISTIC BACKGROUND OF STUDENTS & FAMILIES

Screenshots of Module 1-Background

Numbers of students in HI speaking languages other than English



Which languages are spoken most?



Embedded Videos

Teacher educator interviews



Parent interviews



Lesson activities

Topics

5B. OVERCOMING FAMILIES' LACK OF FAMILIARITY WITH THE SCHOOL SYSTEM (ACTIVITY LINKS)

- A. INVITE FAMILIES TO SCHOOL & SHARE VIEWS ABOUT THE ROLE & GOALS OF THE SCHOOL SYSTEM

- B. LEARN ABOUT OTHER STRATEGIES TO HELP FAMILIES TO GAIN A BETTER UNDERSTANDING OF THE SCHOOL SYSTEM

Procedures

3. Some more examples:

Potluck Gathering

1. Use a potluck dinner as a tool to get the school community (e.g., families) together in an informal setting.
 2. Decide upon a date, time, and venue with representatives of all groups.
 3. Have students design invitation cards to send home to their families at school (remember to link these activities to the academic standards) asking participants about what they will bring.
 4. Send invitation cards home. Once feedback has been received or after a week, have students bring to the potluck, have students organize refreshments.
 5. Prepare some activities or games so participants can mingle and socialize.
 6. After the event, ask participants for their feedback on the event.
-

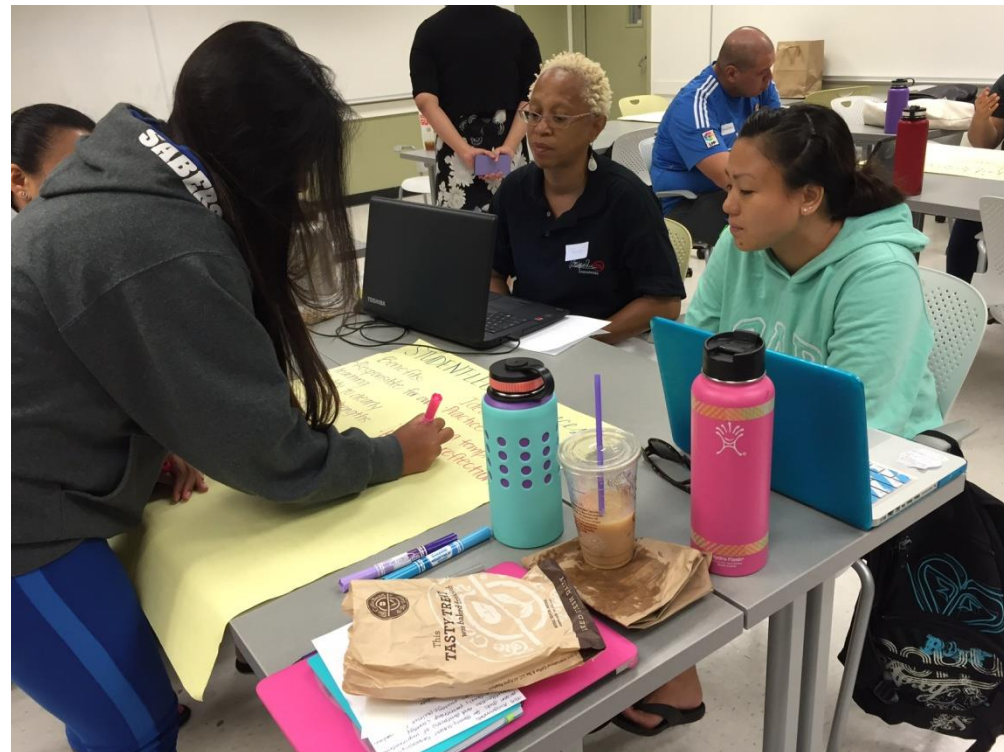
Content and Teacher Standards; Resources

HAWAII TEACHER PERFORMANCE STANDARDS

RESOURCES

Professional Development

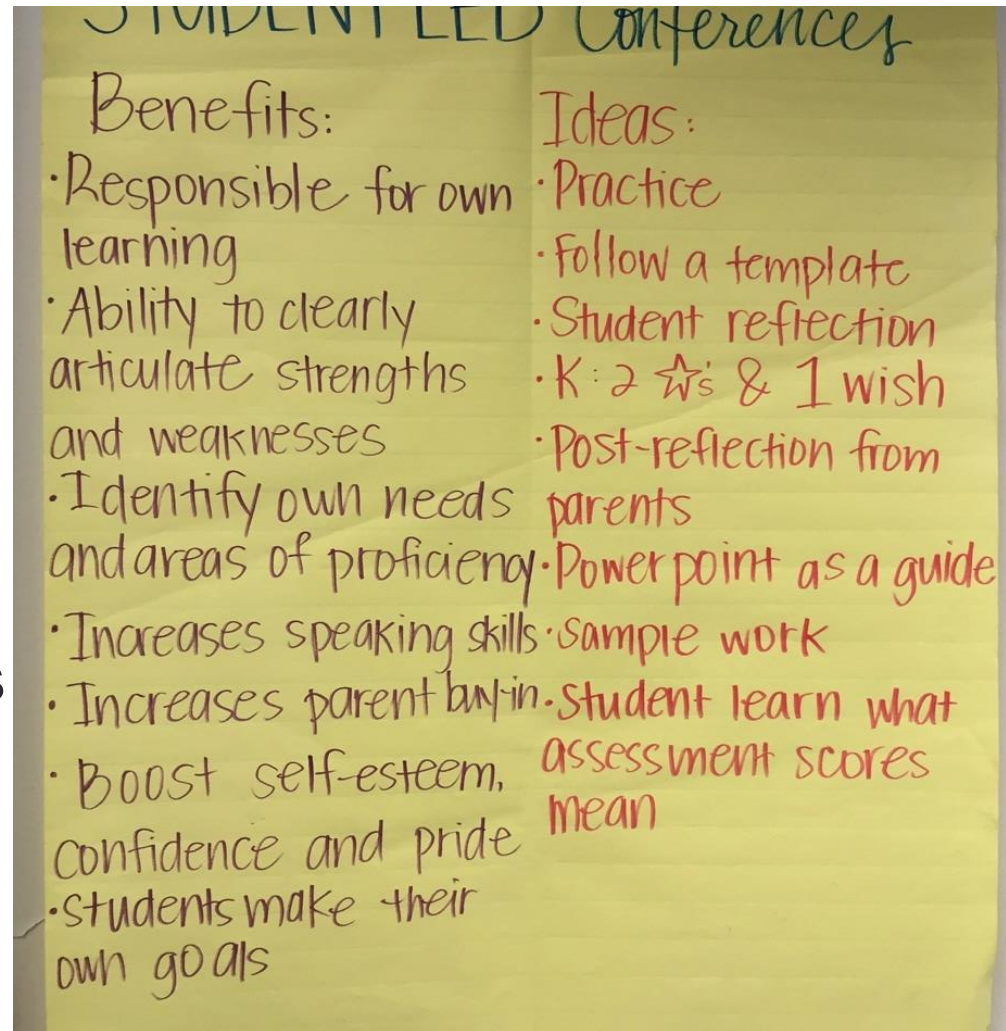
- Development of PDE3 proposal
- First PD course offered in Fall, 2015
 - 13 in-service teachers completed course



Outcomes

Teacher applied strategies:

- Student-led conferences
- Newsletters
- Welcoming and greeting parents
- Use of online communication strategies
- Culture day
- Job fair



Next Steps

(visit: <https://affect.coe.hawaii.edu/>)

- Develop fourth module to focus on families with special needs
- Offer additional PD courses on O'ahu and neighbor islands in partnership with HSTA and TLC
- Develop “trainers” among course participants
- Document effectiveness of modules and PD courses through research
- Develop materials to support PD

