




STATE OF HAWAII
DEPARTMENT OF EDUCATION
P.O. BOX 2360
HONOLULU, HAWAII 96804

OFFICE OF THE SUPERINTENDENT

May 2, 2019

TO: The Honorable Catherine Payne
Chairperson, Board of Education

FROM: Dr. Christina M. Kishimoto 
Superintendent

SUBJECT: **Presentation on Nanakuli High and Intermediate School**

1. DESCRIPTION

Presentation on Nanakuli High and Intermediate School.

2. PRESENTATION

Principal Darin Piliialoha and his team will provide information on Nanakuli High and Intermediate School.

CMK:dr
Attachment

c: Deputy Superintendent

Presentation on Nanakuli High and Intermediate School

Board of Education
General Business Meeting
May 2, 2019

Darin Pilialoha
Principal, Nanakuli High and Intermediate School

HAWAII STATE DEPARTMENT OF EDUCATION
HawaiiPublicSchools.org



NANAKULI HIGH &
INTERMEDIATE SCHOOL
April 2019

[ACADEMIC ACHIEVEMENT]

[KEEP CHILDREN SAFE]



[IN SCHOOL AND LIFE]

PHOTO: Academic Achievement – Students signing; Keep Children Safe – Hula dancers; In School and Life – NHIS student assembly.

OUR BELIEF

E PO'OKELA

STRIVING TOGETHER TOWARDS EXCELLENCE



NHIS Principal Pilioloha congratulates a student on his accomplishments.

Who We Are

DREAM

BELIEVE

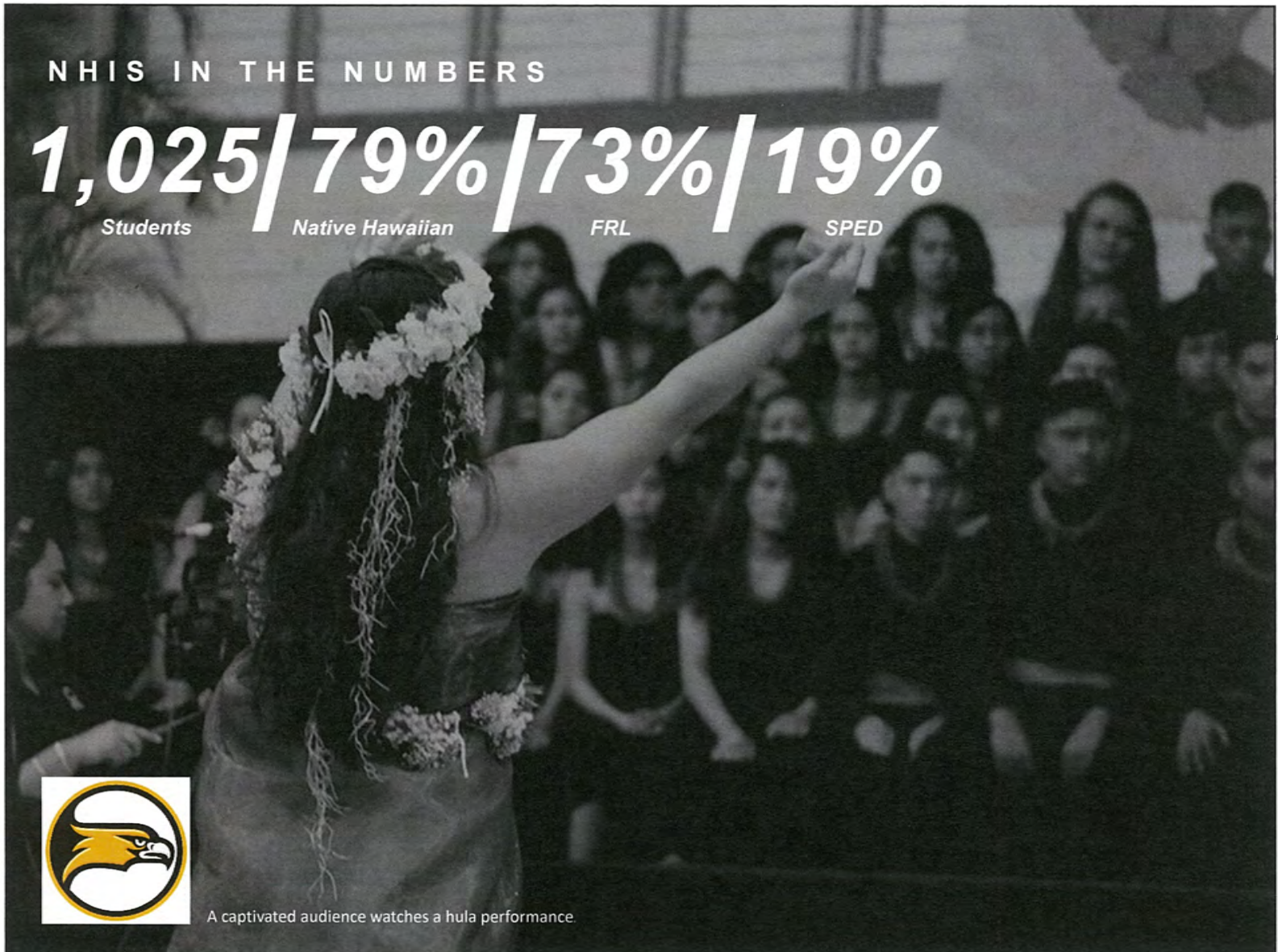
ACHIEVE

OUR GRADUATE PROFILE

- **Kulia I Ka Nu'u:** We seek the highest.
- **Self-Directed Learners**
- **Complex Thinkers**
- **Effective Communicators** lessons and technology.
- **Respectful and culturally sensitive contributing members of society**

K-12 ALIGNMENT

- A. Attendance
- B. Behavior
- C. College, Career & Civic Responsibility
- D. Academic Rigor





OUR SCHOOL DESIGN GOALS

We have aligned our key performance indicators to reflect our school design.
As a school focused on results, we look at our success the same way our district measures
its success.

Our goals measure the following areas:



**CORE VALUES
& MINDSET**



**CURRICULUM &
LEARNING DESIGN**



**STUDENT LEARNING
PRODUCTS & VOICE**



INFRASTRUCTURE

Photo: NHIS staff discuss school design goals.



CORE VALUES & MINDSET

- Book Study
- Leadership Groups
- Murals



“ At NHIS,
everybody knows
everybody. It feels
like a community
When you walk
around, you know
the majority of the
people. ”

Charles Kaohu
12th Grade



“ I can learn new
things, hang out
with friends,
graduate from
high school and
get a good
education. ”

Kruzzlyn
Mekanani
7th Grade



CURRICULUM & LEARNING DESIGN

- 1-to-1 tech
- Teacher Collaboration
- DDIC
- Consulting / coaching
- CSI Initiatives
- SWAWP



“ My favorite class would have to be Modern History because it teaches us to look at our Hawaiian history from a different perspective. ”

Keshia Ah-Kiong
11th Grade



OUR PROGRAMS

NHIS's professional development programs are comprehensive.



DDIC



CSI INITIATIVES



WALKTHROUGHS



LEADERSHIP



USE OF DATA



PLCS

Top (L to R): DDIC – Teacher in classroom; CSI Initiatives – NHIS Football team; Walkthroughs – JROTC students march in parade.

Bottom (L to R): Leadership – Governor David Ige visits NHIS; Use of Data – NHIS Band; PLCS – BOE Member Kenneth Uemura, Superintendent Kishimoto and students.



STUDENT LEARNING PRODUCTS & VOICE

- KS Partnership
- SCC Council
- NPAC
- Science Fair
- JROTC
- Host International Staff & Students
- 29 Boys & Girls Athletic Teams
- After School All Stars
- PALS and Places Partnerships
- Pueo Partnership with Punahou School
- Waianae Coast Comprehensive



“

NHIS is a place where I have family and friends that truly care about my health and well-being.

”

Justus Waa
11th Grade



INFRASTRUCTURE

- Department Meetings (vertical alignment)
- Grade Level Meetings
- Faculty Meetings
- Facilities
- Upper / lower campus
- Student-based health & wellness center



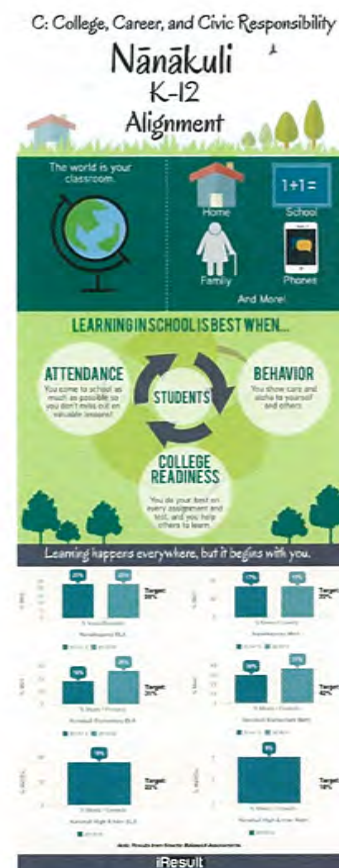
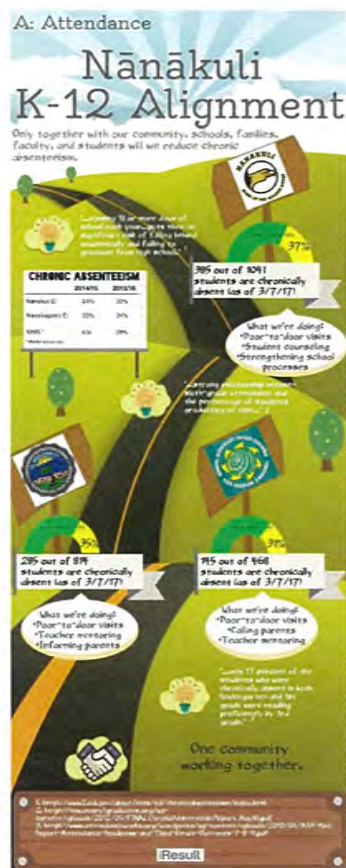
“ My favorite class is math because when we do focus my teacher, Ms. Tominaga, really explains the work well. ”

Glorina
Respicio
7th Grade



OUR APPROACH TO ALIGNMENT

Visit our K12 Alignment Web Portal at <http://nanakuli.datadesign.io>



INFOGRAPHIC: Nanakuli K-12 Achievement (L-R): A. Attendance; B: Behavior; C. College, Career, and Civil Responsibility.



12

CONNECT WITH US

HawaiiPublicSchools.org



HAWAII STATE DEPARTMENT OF EDUCATION
HawaiiPublicSchools.org

