



STATE OF HAWAII
DEPARTMENT OF EDUCATION

P.O. BOX 2360
HONOLULU, HAWAII 96804

OFFICE OF THE SUPERINTENDENT

August 19, 2021

TO: The Honorable Catherine Payne
Chairperson, Board of Education

FROM: Keith T. Hayashi
Interim Superintendent

A handwritten signature in blue ink, appearing to read "Keith T. Hayashi", written over the printed name.

SUBJECT: **Presentation on opening schools for the 2021-2022 school year**

BACKGROUND

The Hawaii State Department of Education's (Department) schools have spent several months demonstrating that campuses can operate safely while accommodating students for in-person learning. Nearly one-third of Department schools were able to welcome students back for full in-person learning during the final quarter of last school year. The majority of schools brought students back to campus in blended learning models due to capacity constraints at the time. Over the summer, 26,000 students enrolled in summer learning opportunities at 222 schools with 74% of these students participating in face-to-face learning.

The Department continues to prioritize in-person learning for the 2021-22 school year, which officially began on August 3, 2021 for most students. In late July, the state Department of Health released revised guidance for schools aligned to this priority, stating, "The goal is to open schools as safely as possible given the many known and established benefits of in-person education."

The health guidance continues to emphasize the importance of the core essential strategies schools have been adhering to since last school year: Consistent masking (masks must be worn by all students and staff when indoors); staying home when ill; and proper hand hygiene. Promoting COVID-19 vaccinations was added as an additional core essential strategy.

The Department also continues to work closely with the Department of Health to monitor health data and trends in the community. With more than 163,000 students and more than 40,000 full- and part-time employees, the Department recorded 1,150 COVID-19 cases systemwide from June 2020 through August 6, 2021. Safety measures are working to quickly identify cases and to mitigate the spread of COVID-19 on our campuses.

In addition to daily in-person learning, schools and complex areas that are able to provide distance learning options within their current resources for staffing and programming have made that option available. If distance learning needs cannot be accommodated within the complex area or school, there are limited spots available in a state distance learning program developed and managed by the Office of Curriculum and Instructional Design.

As we start to welcome students back, the Department is implementing a strategy to help us get a pulse on where our students are so that we can design the appropriate responses and interventions. We're calling this strategy "3-1-1":

- Assessing three priority areas for students: Attendance, Academics and SEL;
- Focusing on one priority area for staff: Well-being;
- And prioritizing one area for the system: A safe return for everyone.

PRESENTATION

The attached presentation highlights the Department's first two weeks of the 2021-2022 school year.

KTH:nk
Attachment

c: Deputy Superintendent
Assistant Superintendents
Complex Area Superintendents



OFFICE OF THE
Superintendent

**Agenda Item V.A. Presentation on
opening schools for the 2021-2022
school year**

**Board of Education General Business Meeting
August 19, 2021**

Keith T. Hayashi
Interim Superintendent

Phyllis Unebasami
Deputy Superintendent



School Year 2021-22: In-person Learning



Students

3

- ✓ ATTENDANCE
- ✓ ACADEMICS
- ✓ SOCIAL-EMOTIONAL LEARNING

Staff

1

- ✓ STAFF WELL-BEING

System

1

- ✓ SAFE RETURN FOR ALL



3-1-1 Data Indicators

Students



Priority: In-person Learning

ATTENDANCE

- Active Attendance
- Chronic Absences
- Exits

ACADEMICS

- Universal Screener
- Progress towards On-Time Graduation
- Curriculum and Grade Marks

SOCIAL-EMOTIONAL LEARNING

- Social-Emotional Learning Survey



3-1-1 Data Indicators

Staff and Systems of Support



Priority: Staff Well-Being

ASSESSMENTS

- Staff Well-Being Surveys
- End-of-year Teacher Survey



Priority: Safe Return for All

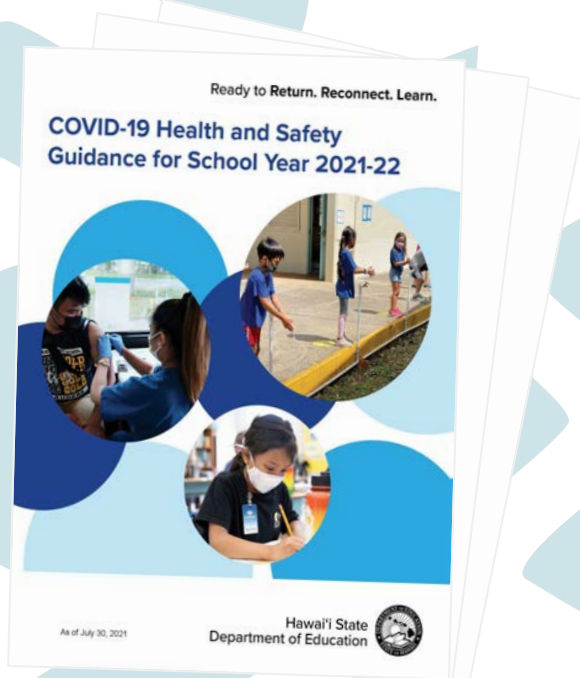
HEALTH AND SAFETY

- Promoting Vaccinations
- Personal Protective Equipment

Managing In-person Learning

During the Current Infection Surge

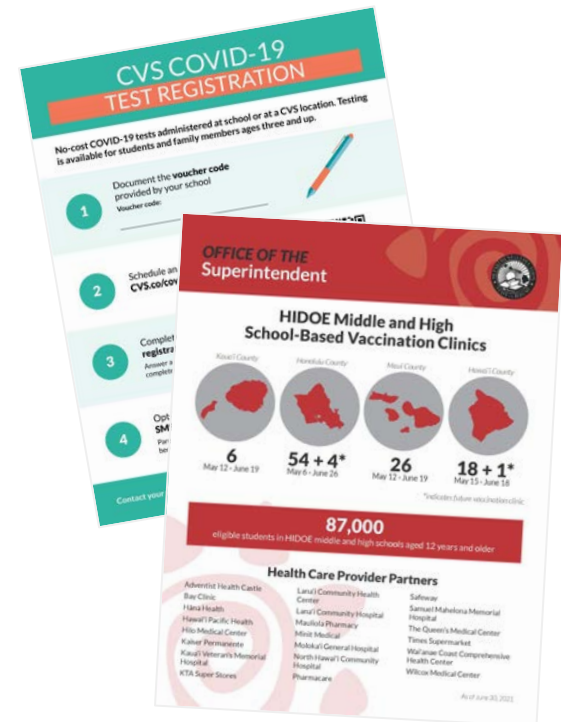
COVID-19 Health and Safety Guidance for SY 2021-22



Core Mitigation Strategies



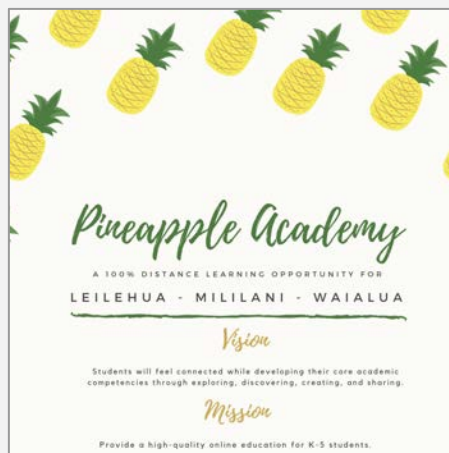
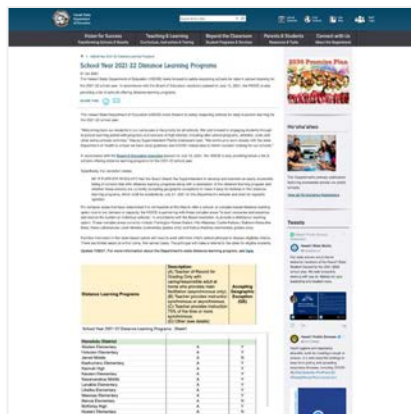
Collaboration with DOH and local health service providers





Distance Learning

Complex Areas and School Level	State Distance Learning Plan
<p>Coordinated programs and individual school programs approved by respective Complex Area Superintendent and submitted to Office of Curriculum and Instructional Design.</p>	<p>For grades K–12, synchronous and asynchronous.</p> <p>K12/Stride Learning Solutions with a teacher assigned to support the learning for grades K-8.</p> <p>Arizona State University Prep Digital Year 2 pilot program.</p>
<p>Example: Daniel K. Inouye Elementary is host site for complex-wide, distance learning opportunity for Leilehua, Mililani and Waialua students.</p>	<p>E-School online courses for middle and high school for supplementary courses.</p> <p>Online curriculum material access for secondary schools via the Hawai'i Virtual Learning Network.</p> <p>High school students will have six courses in order to earn six credits for matriculation to the next level.</p>



Daily Reporting for COVID-19 Cases

Communication for every report of COVID at a school or office

Immediate notification about possible exposure to individuals who may have come into close contact with the infected person.

Notification to staff and the school community about possible exposure and steps the Department has taken to contain the spread of infection.

Weekly list of all confirmed COVID cases published on HIDOE website:

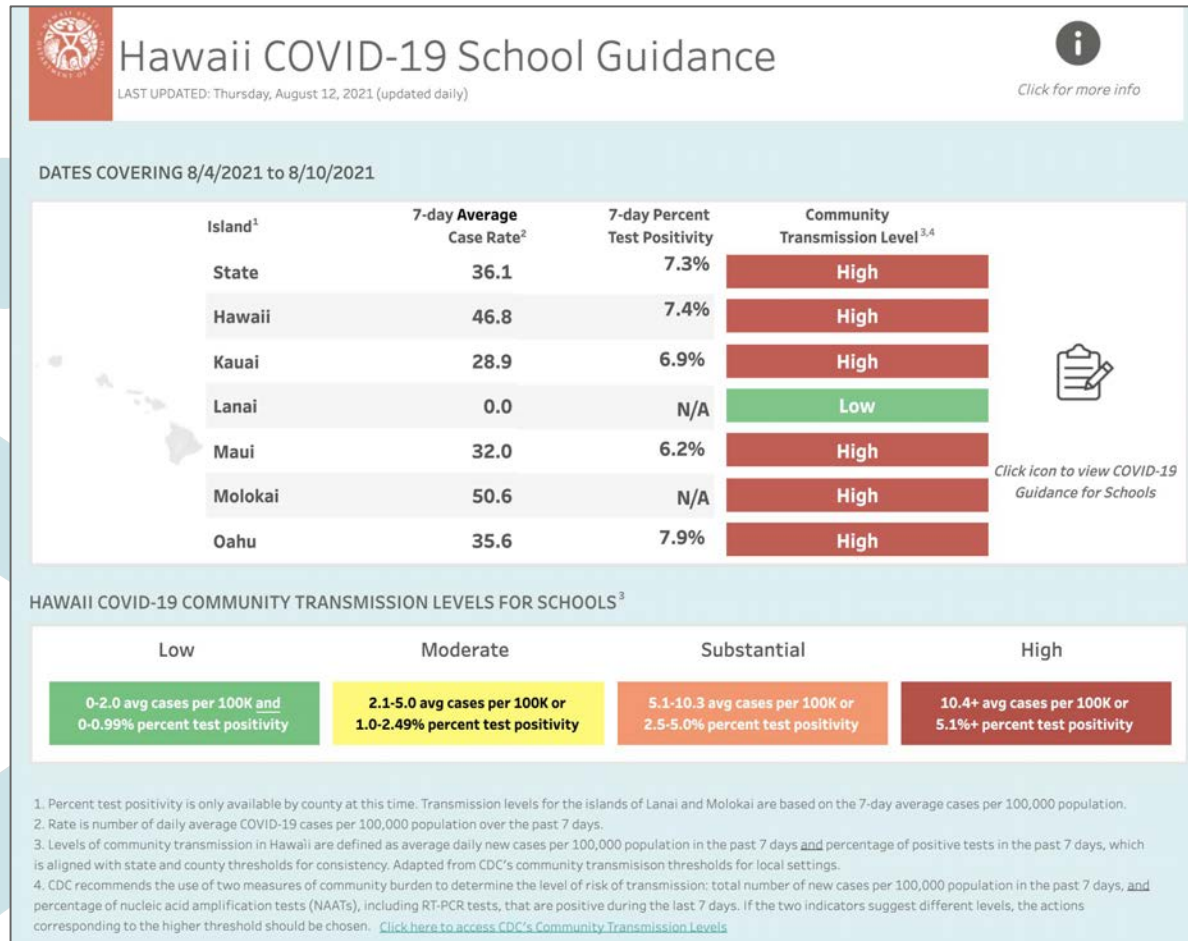
bit.ly/hidoe-covid-updates

Effective July 9, weekly reporting of cases by complex area is now reported by school in accordance with Act 004, which became law July 6. Report also includes date the positively tested student, staff or affiliated individual was last on campus.





Tier Changes and Action Triggers



In **High Transmission** tier, DOH guidance recommendation: Cancel or hold high-risk sports and extracurricular activities virtually to protect in-person education, unless all participants are fully vaccinated.



School Year 2021-22: Student Athletics



By Sept. 24, 2021:

- All student-athletes, athletics staff, and athletics volunteers will need to be fully vaccinated to participate
- Participation in extracurricular athletic programs is a privilege; Department can require reasonable restrictions
- Participation in athletics can increase risk of exposure to COVID-19, which could negatively impact health and education



Mahalo!

