



**STATE OF HAWAII
DEPARTMENT OF EDUCATION**

P.O. BOX 2360
HONOLULU, HAWAII 96804

OFFICE OF THE SUPERINTENDENT

September 16, 2021

TO: The Honorable Catherine Payne
Chairperson, Board of Education

FROM: Keith T. Hayashi 
Interim Superintendent

SUBJECT: **Update on Opening Schools for the 2021-2022 School Year:
Continuing Education for Students in Isolation and Quarantine,
Department Employee Vaccination Status Data, COVID-19 Cases in
Schools and School Positivity Rates, Masking Guidance Changes,
Distance Learning Status Update for the Department's State Distance
Learning Program and Kaiapuni Programs, Expanding COVID-19
Testing in Schools, and Readiness of Schools to Transition to
Distance Learning**

BACKGROUND

The Hawaii State Department of Education (Department) continues to prioritize safe in-person learning as we approach the midpoint of the first quarter of School Year 2021-22. The increase in cases in the state and the delta variant were unexpected as schools prepared to re-engage students following two COVID-disrupted academic years.

The evolving pandemic demands our attention and focus to keep schools open for in-person learning and safe for students and employees. The Department is working closely with the Hawaii State Department of Health (DOH) to respond with updated safety strategies and heightened monitoring and enforcement.

Our schools remain open to serve students.

The Honorable Catherine Payne
September 16, 2021
Page 2

Our COVID-19 Health and Safety Guidance continues to reflect the latest recommendations from the DOH, the Centers for Disease Control and Prevention and other health experts. Schools and offices are implementing four core essential strategies to mitigate exposure and spread: encouraging COVID-19 vaccinations among eligible students and staff, consistent and correct mask usage, staying home when sick, and proper hand hygiene.

The DOH advises that in-person education always requires the implementation of the core essential strategies. Other strategies, including designated cohorts, improving ventilation, physical distancing, screening testing, and cleaning and disinfection, are to be applied in combination with the core essential strategies to the greatest extent possible. According to the DOH, using multiple mitigation measures consistently and in combination gives schools the flexibility to achieve safe learning environments even when not every mitigation measure can be applied.

To provide accurate and timely information to families and the public, the Department recently developed an interactive dashboard available on our website that displays confirmed COVID cases in the Department's schools and offices. The daily case counts on the dashboard reflect confirmed cases reported the day prior.

While there are cases being reported within the public school system, the mitigation strategies our schools are implementing have proven to be effective at quickly identifying cases and preventing spread. Keeping our schools safe and open for in-person learning requires a shared commitment from all of us to prevent and mitigate the spread of COVID-19.

PRESENTATION

The attached presentation provides updates on the Department's opening of the 2021-22 school year.

KTH:nk
Attachment

c: Deputy Superintendent
Assistant Superintendents
Complex Area Superintendents



OFFICE OF THE
Superintendent

Agenda Item V.A. Update on Opening Schools for the 2021-2022 School Year: Continuing Education for Students in Isolation and Quarantine, Department Employee Vaccination Status Data, COVID-19 Cases in Schools and School Positivity Rates, Masking Guidance Changes, Distance Learning Status Update for the Department's State Distance Learning Program and Kaiapuni Programs, Expanding COVID-19 Testing in Schools, and Readiness of Schools to Transition to Distance Learning

**Board of Education General Business Meeting
September 16, 2021**

Keith T. Hayashi
Interim Superintendent

Phyllis Unebasami
Deputy Superintendent



Continuing Education for Students Impacted by COVID-19



Hilo
Intermediate
Packet
Pickup



Ewa Makai
Middle
Distance
Learning



Update on Vaccination Status of Employees



89%

of salaried employees are vaccinated

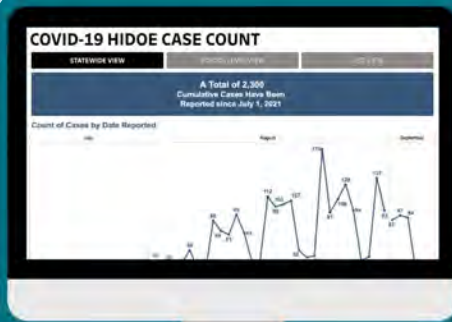


As of August 31, 2021



Update on COVID Cases in Schools

<http://bit.ly/hideoe-covid-updates>



COVID-19 HIDEO CASE COUNT

Case No.	School	Date Reported	County	Case Type	Case Status
1
2
3
4
5
6
7
8
9
10



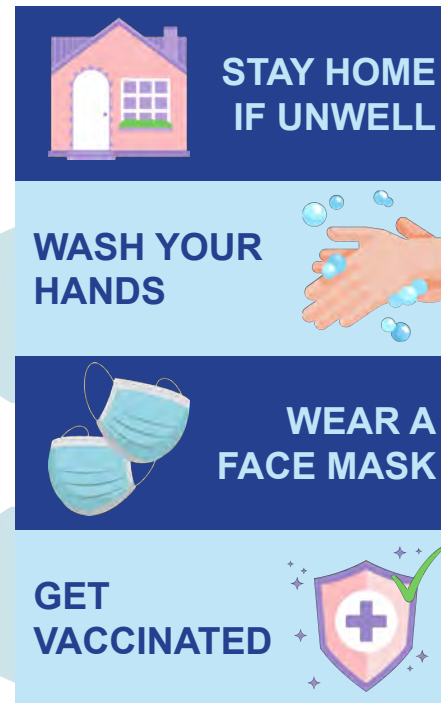
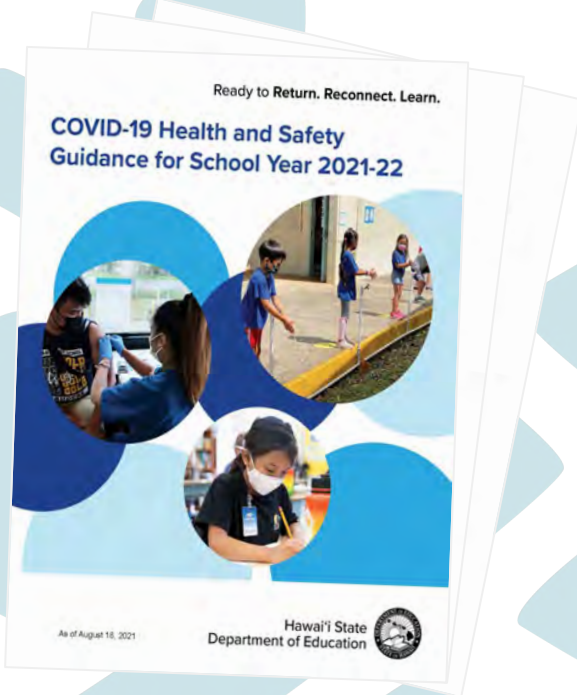


Update on Masking Guidance

COVID-19 Health and Safety Guidance for SY 2021-22

Core Mitigation Strategies

Collaboration with DOH and local health service providers





Update on Distance Learning



Complex Areas and School Level

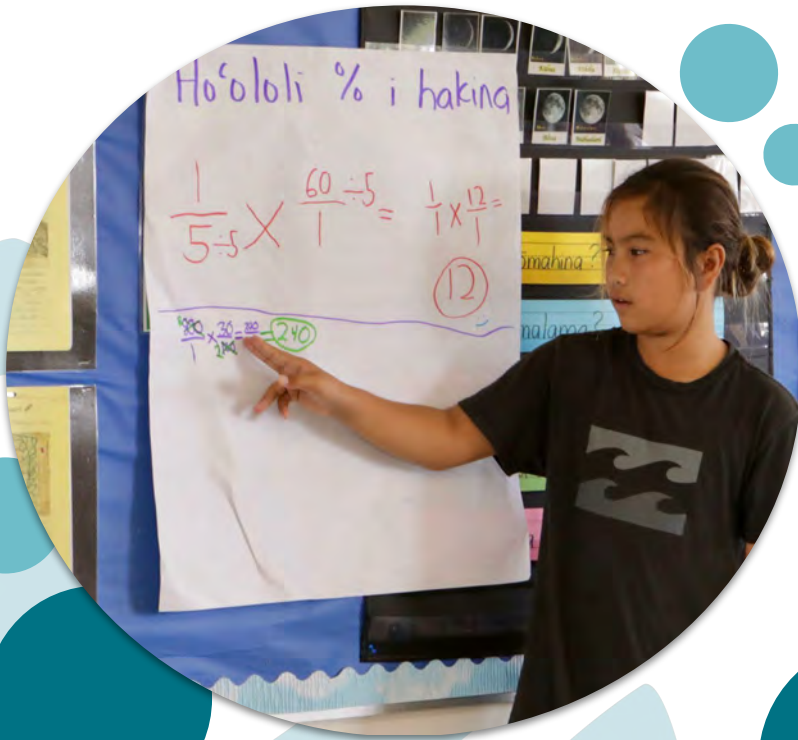
- Coordinated programs and individual school programs approved by respective Complex Area Superintendent and submitted to the Office of Curriculum and Instructional Design.
- Example: Daniel K. Inouye Elementary is a host site for complex-wide, distance learning for Leilehua-Mililani-Waialua students.

State Distance Learning Program

- Currently serving approximately 625 students in partnership with 60 schools from across the state.
- As of September 7, all referred students are in classes with a teacher.



Kaiapuni: Distance Learning





Update on On-Campus Testing



SIGNUP FOR TESTING /// STAY IN SCHOOL /// BE WITH FRIENDS



Update on Contingency Planning



Hawaii COVID-19 School Guidance

LAST UPDATED Wednesday, September 8, 2021 (updated daily)



[Click for more info](#)

DATES COVERING 8/31/2021 to 9/6/2021

Island ¹	7-day Average Case Rate ²	7-day Percent Test Positivity	Community Transmission Level ^{3,4}
State	49.6	7.2%	High
Hawaii	53.9	7.4%	High
Kauai	55.3	5.1%	High
Lanai	9.1	N/A	Substantial
Maui	57.1	6.3%	High
Molokai	7.8	N/A	Substantial
Oahu	48.3	8.2%	High



[Click icon to view COVID-19 Guidance for Schools](#)

HAWAII COVID-19 COMMUNITY TRANSMISSION LEVELS FOR SCHOOLS³

Low	Moderate	Substantial	High
0-2.0 avg cases per 100K and 0-0.99% percent test positivity	2.1-5.0 avg cases per 100K or 1.0-2.49% percent test positivity	5.1-10.3 avg cases per 100K or 2.5-5.0% percent test positivity	10.4+ avg cases per 100K or 5.1%+ percent test positivity



Mahalo!

