



**STATE OF HAWAII**  
**DEPARTMENT OF EDUCATION**

P.O. BOX 2360  
HONOLULU, HAWAII 96804

OFFICE OF THE SUPERINTENDENT

October 3, 2019

TO: The Honorable Catherine Payne  
Chairperson, Board of Education

FROM: Dr. Christina M. Kishimoto  
Superintendent

A handwritten signature in blue ink, appearing to read "CK", is placed over the name of the Superintendent.

SUBJECT: **Presentation on School Performance Results for the 2018-2019 School Year**

EXECUTIVE SUMMARY

The Strive HI system reports school and student performance indicators that comprise the first ten of the fourteen statewide student success indicators of the Hawai'i State Department of Education and Board of Education Strategic Plan 2017-2020. There are indicators to reflect unique stages of the grade spans, but most measures are applicable across grades. Some measures are used for federal accountability under the Every Student Succeeds Act (ESSA). In the Strive HI School Reports, schools have the option of reporting additional local measures around their school design that are important to their own school community.

Annually, this data is reported during this time of the year when Smarter Balanced results become available. Data shared will include students meeting achievement targets on statewide assessments in English Language Arts/Literacy, Mathematics, and Science over the past three years; the performance differential between high-needs students and their peers; and other data predictive of college and career readiness.

The presentation will include a summary of Department strategies to support student achievement for the upcoming school year.

To frame the information that will be shared, the enrollment for SY 2018-19 was 179,698 students, an increase of 443 students from the previous school year. Of the total enrollment, 9% (16,275 students) were English Language Learners; 48% (85,760 students) eligible for Free/Reduced lunch; and 10% (17,591 students) received special education services.

This presentation will focus on three guiding questions:

Question 1: What is the student performance data telling us for SY 2018-19?

Question 2: How is the student performance data predictive of college and career readiness?

Question 3: How are we continuing to redefine student success and support all students?

#### DESCRIPTION

- The presentation will include information from the Strive HI performance system, Smarter Balanced Assessment, and other measures of student progress, as well as Department actions to increase achievement in Math and Science.
- Following the Board of Education meeting, the Strive HI Statewide Snapshot will be available on the [hawaiipublicschools.org](http://hawaiipublicschools.org) website with the complete set of metrics. School Strive HI reports will be available on school websites as well.

CMK:tu  
Attachment

c: Office of Strategy, Innovation and Performance  
Office of Curriculum and Instructional Design

# Presentation on School Performance Results for the 2018-2019 School Year

**General Business Meeting  
State of Hawaii Board of Education  
October 3, 2019**

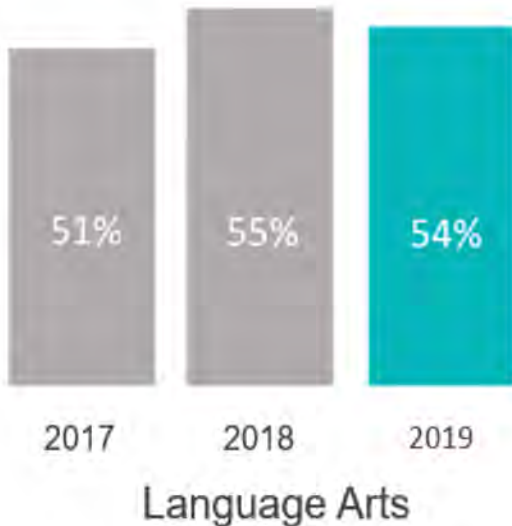
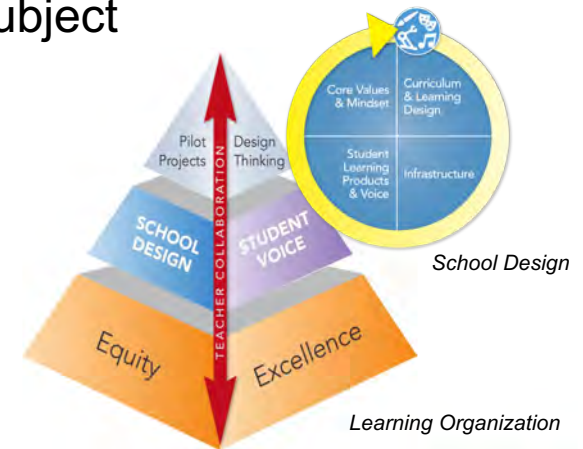
***Office of Strategy, Innovation and Performance  
Office of Curriculum and Instructional Design***



# Academic Performance

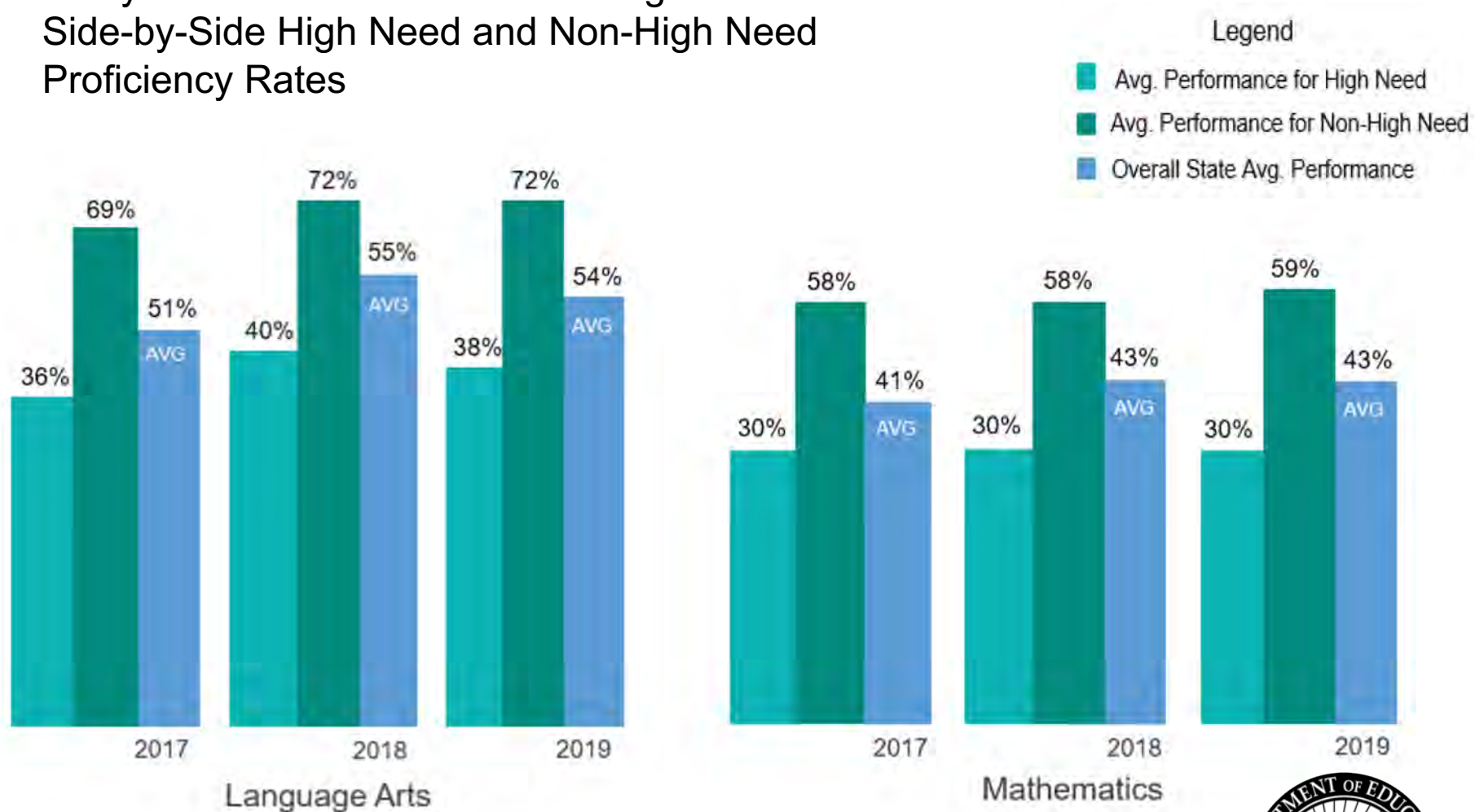
3 Year Trends in Proficiency using State Averages by Subject

*What is the student performance data telling us for SY 2018-19?*



# Achievement Gap

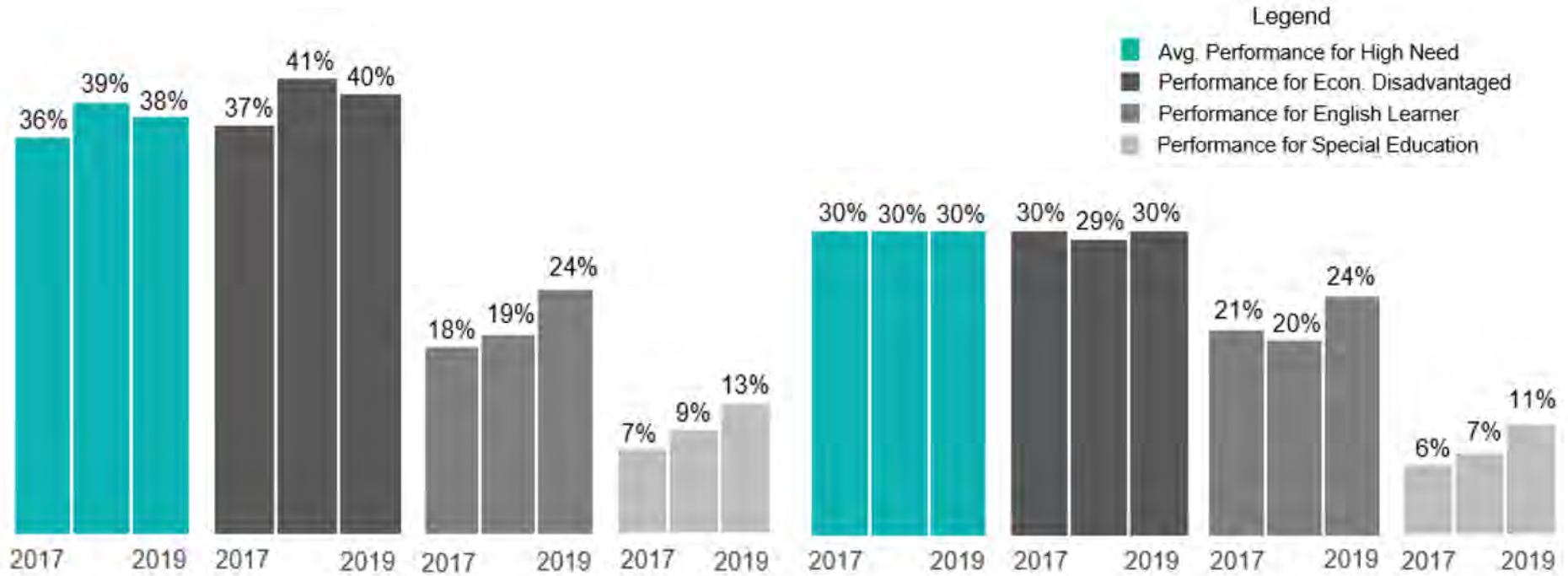
Analysis of 3 Year Trends in Average Performances:  
Side-by-Side High Need and Non-High Need  
Proficiency Rates



# Achievement Gap

Analysis of 3 Year Trends for High Needs Subgroups:  
English Language Arts and Mathematics

**2019 Inclusion rate: 44%**  
*Increase of 3 points from last year and 7 point increase from baseline data in 2016.*



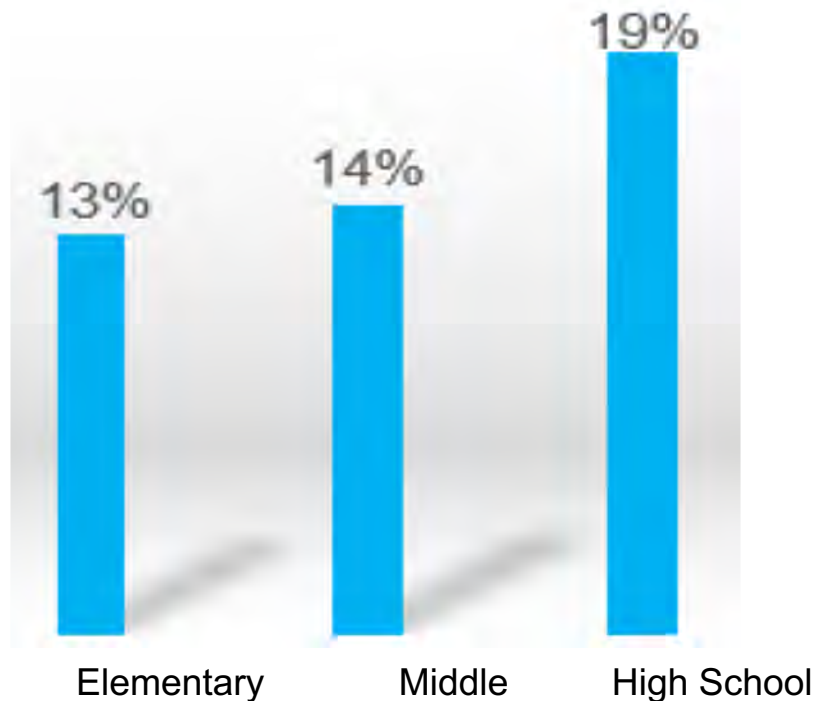
English: performance of high needs population by subgroup type

Mathematics: performance of high needs population by subgroup type



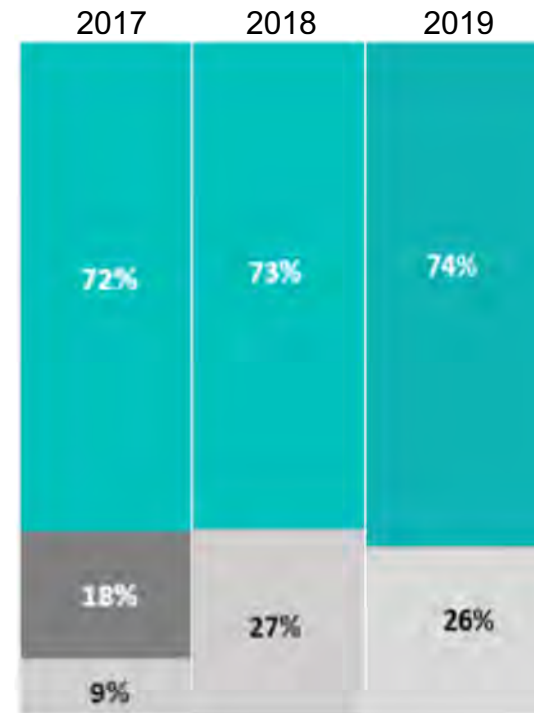
# Chronic Absenteeism/School Climate

Side-by-Side Analysis of School Environment



## Chronic Absenteeism

State Average: 15%



## School Climate

74% of students feel positive about their school



# College & Career Readiness

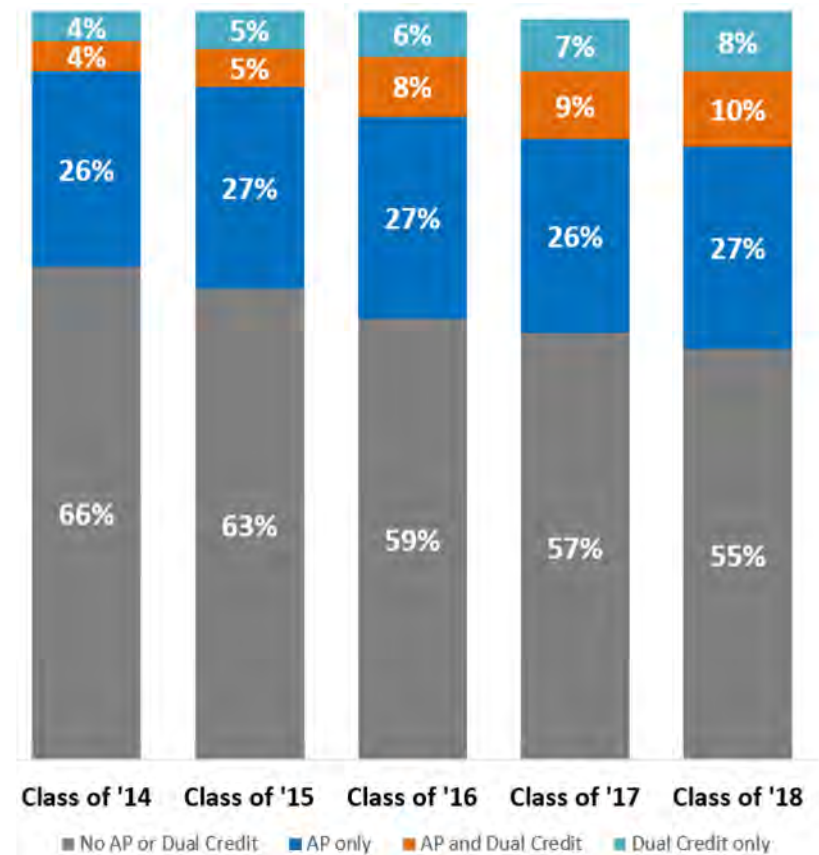
Indicators on AP participation & Dual Credit

*How is the student performance data predictive of college and career readiness?*



AP Participation\*

\*Preliminary Data



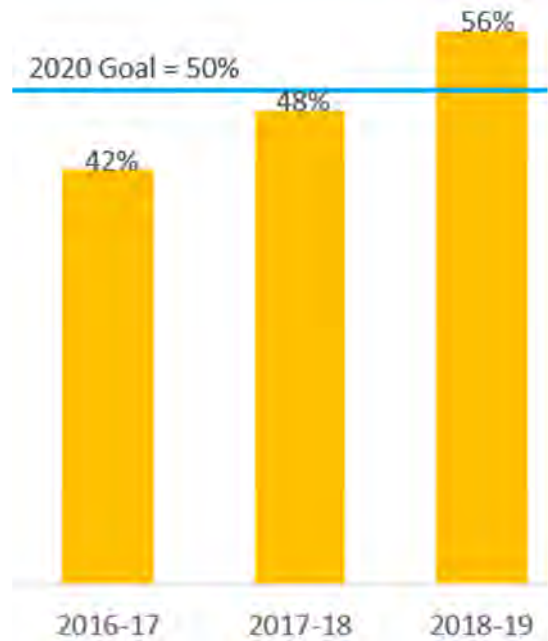
Dual Credit





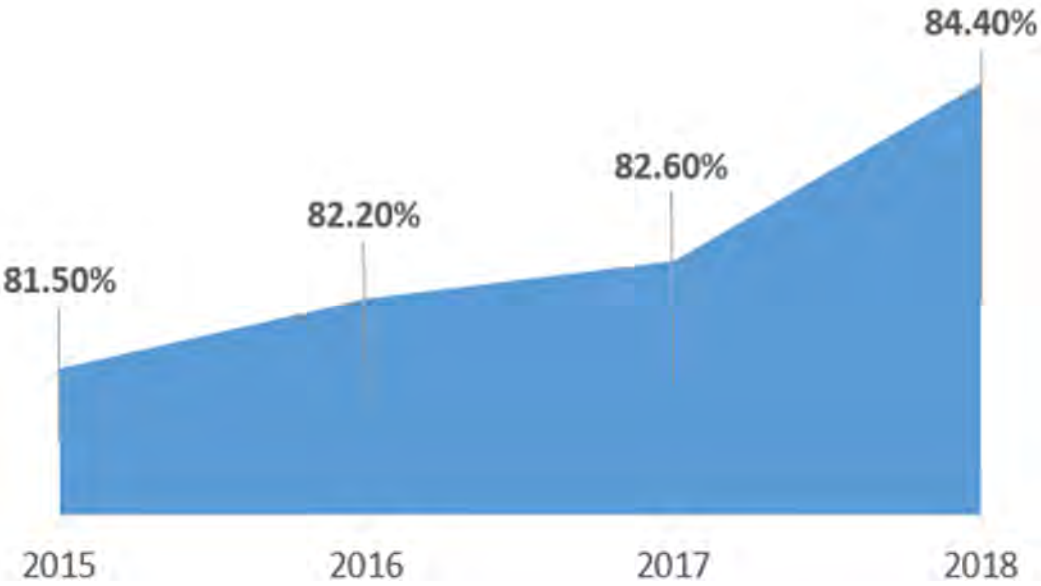
# College & Career Readiness

CTE Concentrators, Graduation Trends, College Going Rates



CTE Concentrator

2019 College Going Rate: 55%



Graduation Trend



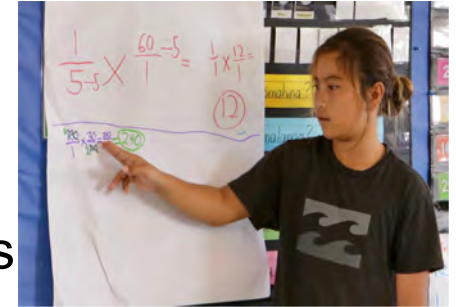
# Math Empowerment Through Kākou



STUDENT VOICE

## Access & application in:

- Problem solving discourse
- Empathetic understanding
- Rigorous and relevant mathematics



Hau'ula Elementary, 2017



TEACHER  
COLLABORATION

## Physical & digital space for:

- Instructional and curricular resources that empower student voice
- Promising practices, systems and professional learning



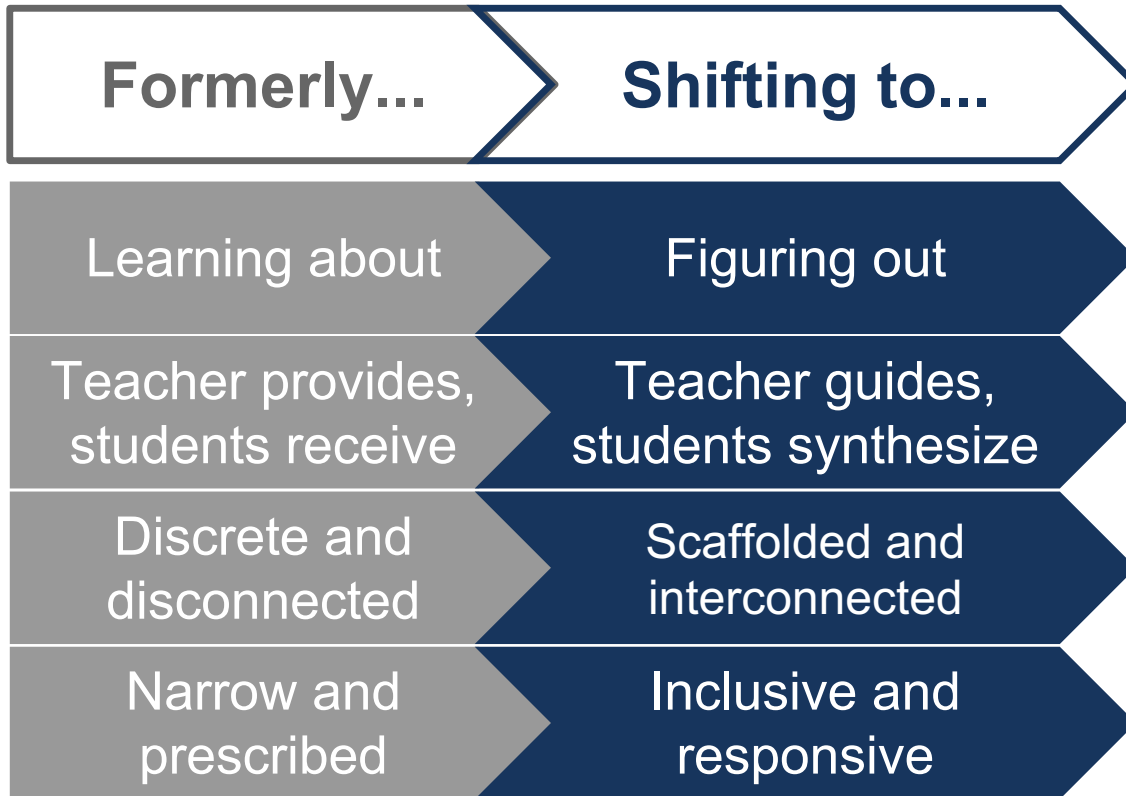
SCHOOL DESIGN

## Personalized:

- Student-centered coaching model
- Place-based applied learning
- Tier 2 instruction and intervention



# Science in Transition



## NGSS-Aligned Learning and Assessments

- Connect to phenomena or problems
- Require reasoning using evidence
- Integrate three dimensions



# Next Steps

- ▶ Use the gap analysis to inform targeted supports
- ▶ Ensure the alignment between the results, strategies and implementation
- ▶ Build and strengthen capacity to support complexes and schools
- ▶ Hawai'i Board of Education Data Retreat November 7, 2019



*Moanalua Middle School, 2018-19*