


STATE OF HAWAII
DEPARTMENT OF EDUCATION
KA 'OIHANA HO'ONA'AUAO
P.O. BOX 2360
HONOLULU, HAWAII 96804

OFFICE OF THE SUPERINTENDENT

November 16, 2023

TO: The Honorable Warren Haruki
Chairperson, Board of Education

FROM: Keith T. Hayashi
Superintendent 

SUBJECT: Report of the Superintendent: (A) Maui Wildfires Impacts and (B) Awards and Recognitions for Students, Employees and/or Schools

UPDATE

The Hawaii State Department of Education (Department) continues to navigate the significant impacts of the West Maui (Lāhainā) wildfires which affected Lāhainā communities and schools in the Lāhaināluna complex: King Kamehameha III Elementary School, Princess Nāhi'ena'ena Elementary School, Lāhainā Intermediate School, and Lāhaināluna High School.

The attached presentation provides information about Maui wildfire impacts and statewide and national recognitions awarded to the Department's schools, employees and partnerships.

KTH:toc
Attachment



HAWAII STATE

Department of Education

Agenda Item III:

Report of the Superintendent:

- (A) Maui Wildfires Impacts and**
- (B) Awards and Recognitions for Students, Employees and/or Schools**

Hawai'i State Board of Education
General Business Meeting
November 16, 2023

Keith T. Hayashi, Superintendent



SECTION

A

Maui Wildfires Impact



Lāhainā Complex Schools Health and Safety Continuous monitoring

Progress reports (updated Nov. 7)

Report updated as new information becomes available

<https://www.hawaiipublicschools.org/ConnectWithUs/MediaRoom/PressReleases/Pages/maui-schools-progress-updates.aspx>

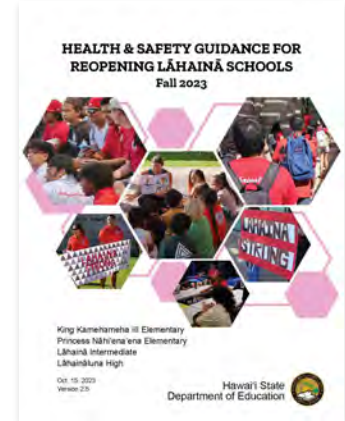
- Support for Students' Mental Health and Well-being
- Support for Employees' Mental Health and Well-Being

Health & Safety Guidance for Reopening Lāhainā Schools

<https://www.hawaiipublicschools.org/DOE%20Forms/HealthandSafetyforReopeningLahainaSchools-Fall2023.pdf>

Bi-weekly Wipe Tests

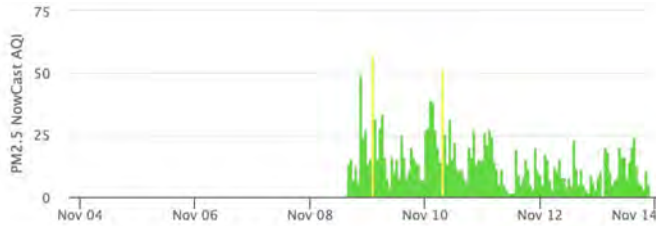
The Department has hired a contractor to conduct bi-weekly wipe sampling in Lāhainā classrooms to test for any particles settling on surfaces. The Oct. 23 and Nov. 6 sampling found no lead or arsenic.





Lāhainā Complex Schools Health and Safety Continuous monitoring

Lāhaināluna High monitors



Latest PM2.5 NowCast AQI: 5 at 11/13/23 9pm HST

Latest PM2.5 NowCast AQI: 13 at 11/13/23 9pm HST

Princess Nāhi'ena'ena EI monitor



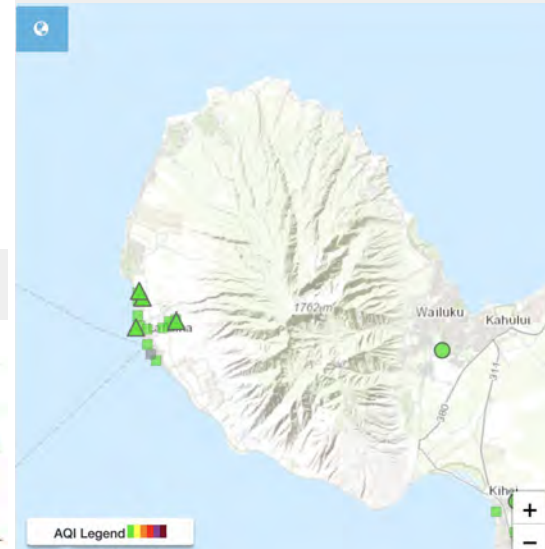
Latest PM2.5 NowCast AQI: 11 at 11/13/23 9pm HST

Lāhainā Inter monitor



test PM2.5 NowCast AQI: 10 at 11/13/23 9pm HST

<https://fire.airnow.gov>
Air quality readings, updated hourly





King Kamehameha III Elementary Maui temporary relocation site at Pulelehua

<https://go.hidoe.us/KKIII>

November 6, 2023

- [USACE awards \\$53.7 million contract to Pono Aina Management for temporary elementary school construction](#)

October 30, 2023

- [USACE presents temporary school construction plan to Hawai'i Finance Committee](#)

The screenshot shows a webpage titled "King Kamehameha III Campus Updates" under the "West Maui School Resources" header. The page features two main sections: "US Army Corps of Engineers Honolulu District Website" and "USACE Hawai'i Wildfires Response".

The "USACE Hawai'i Wildfires Response" section contains the following text:

The King Kamehameha III Elementary campus - which had been located along Front Street and was lost to the Aug. 8, 2023 wildfires - is sharing a campus with Princess Nāhiʻenuia Elementary utilizing a mixture of traditional classroom spaces and high-quality tent structures equipped with power, air conditioning and laminate floors. Grades K-1 are in classrooms on the Nāhiʻenuia campus while grades 2-5 are in the structures.

The interim setup will be in place until a planned temporary school site being developed near Kapulua Airport is open. The Federal Emergency Management Agency (FEMA) is helping fund the temporary replacement site while the U.S. Army Corps of Engineers (USACE) is handling construction.

The page lists several updates:

- November 6, 2023**
 - [USACE awards \\$53.7 million contract to Pono Aina Management for temporary elementary school construction](#)
- October 30, 2023**
 - [USACE presents temporary school construction plan to Hawai'i Finance Committee](#)
 - Facebook post with images: <https://www.facebook.com/3hooakui@district/posts/565009a1Ym1EoC6f8cdK9yQ2N4rLFWgG7zZ6CUAMwMD6VwEGJm709y9Pa7m7XSI>
- October 11, 2023**
 - Facebook post: USACE civil engineers survey site conditions and confirm utility locations on the site of a new temporary school campus in Lāhainā, Hawai'i, Oct. 9. <https://www.facebook.com/3hooakui@district/posts/565027242eCA573nawH6nG5uCvc78n6fLKG6eK9v0yJ2yQ2=AAVYFJaNM4Y8vmsQivV3S>
- September 26, 2023**
 - Gov. Green, Health Director Fink and and Superintendent Hiramani announce interim plans for Lāhainā schools and site for a temporary replacement school for King Kamehameha III Elementary

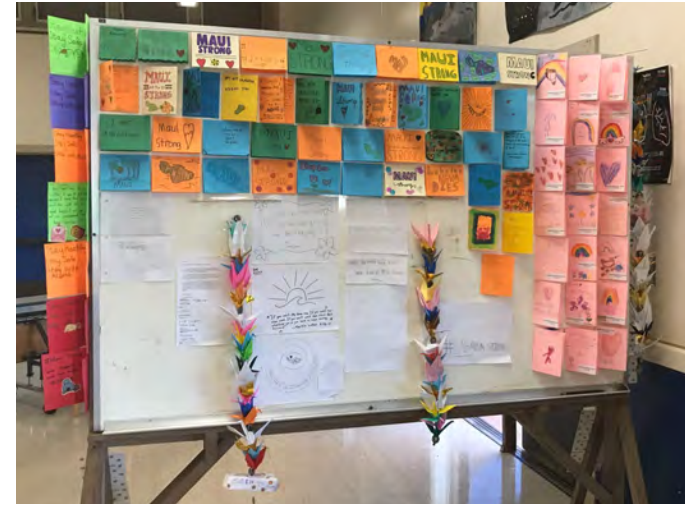
An aerial map of the construction site is visible on the right side of the page.



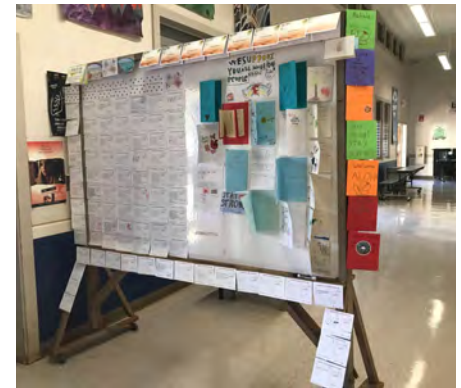
Community contributions

Examples of contributions

- HIDOE and an anonymous donor funded \$1,000 DonorsChoose gift codes for approximately 1,600 Lāhainā and Maui teachers as they returned from fall break to support classroom learning.
- An anonymous donor has funded school meals for all Lāhainā students through end of December.
- An art auction featuring artwork by Lāhaināluna students and their teacher will benefit the Lāhainā community: go.hidoe.us/3svnvsb
- HIDOE partnered with Public Schools of Hawai'i Foundation to help raise \$500,000+ in donations to benefit Lāhainā schools.



Lāhainā
Intermediate
display set up in
the cafeteria with
cards and positive
messages from
across the state
and continent.
November, 2023





Lāhaināluna High homecoming varsity football game on October 21, 2023





SECTION

B

Awards & Recognitions

For Students, Employees and/or
Schools



Workforce Development Council Workforce Hero Superintendent Keith Hayashi

The award recognizes an individual with a career-long commitment to advocating for local career pathways and preparing individuals for viable employment and career advancement in Hawai'i.





Lāhainā Intermediate



Princess Nāhi'ena'ena



Princess Nāhi'ena'ena



#MAUISTRONG



Lāhaināluna High



Lāhaināluna High



King Kamehameha III Elementary