

STATE OF HAWAII
DEPARTMENT OF EDUCATION
KA 'OIHANA HO'ONA'AUAO
P.O. BOX 2360
HONOLULU, HAWAII 96804

OFFICE OF THE SUPERINTENDENT

November 16, 2023

TO: The Honorable Warren Haruki
Chairperson, Board of Education

FROM: Keith T. Hayashi
Superintendent 

SUBJECT: Report of the Superintendent: (A) Maui Wildfires Impacts and (B) Awards and Recognitions for Students, Employees and/or Schools

UPDATE

The Hawaii State Department of Education (Department) continues to navigate the significant impacts of the West Maui (Lāhainā) wildfires which affected Lāhainā communities and schools in the Lāhaināluna complex: King Kamehameha III Elementary School, Princess Nāhi'ena'ena Elementary School, Lāhainā Intermediate School, and Lāhaināluna High School.

The attached presentation provides information about Maui wildfire impacts and statewide and national recognitions awarded to the Department's schools, employees and partnerships.

KTH:toc
Attachment



HAWAII STATE

Department of Education

Agenda Item III:

Report of the Superintendent:

- (A) Maui Wildfires Impacts and**
- (B) Awards and Recognitions for Students, Employees and/or Schools**

Hawai'i State Board of Education
General Business Meeting
November 16, 2023

Updated

Keith T. Hayashi, Superintendent



SECTION

A

Maui Wildfires Impact



Lāhainā Complex Schools Health and Safety Continuous monitoring

Progress reports (updated Nov. 7)

Report updated as new information becomes available

<https://www.hawaiipublicschools.org/ConnectWithUs/MediaRoom/PressReleases/Pages/maui-schools-progress-updates.aspx>

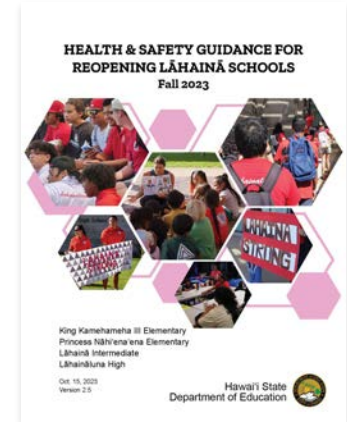
- Support for Students' Mental Health and Well-being
- Support for Employees' Mental Health and Well-Being

Health & Safety Guidance for Reopening Lāhainā Schools

<https://www.hawaiipublicschools.org/DOE%20Forms/HealthandSafetyforReopeningLahainaSchools-Fall2023.pdf>

Bi-weekly Wipe Tests

The Department has hired a contractor to conduct bi-weekly wipe sampling in Lāhainā classrooms to test for any particles settling on surfaces. The Oct. 23 and Nov. 6 sampling found no lead or arsenic.

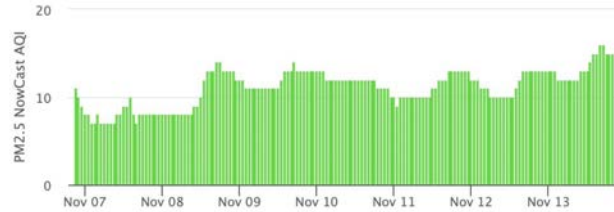
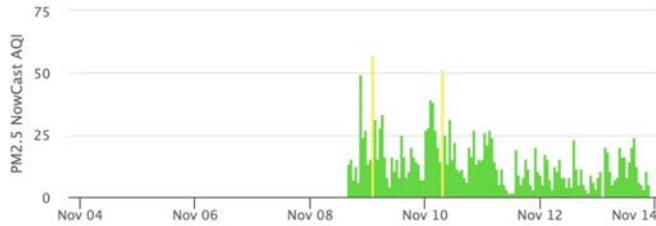




Lāhainā Complex Schools Health and Safety

Continuous monitoring

Lāhaināluna High monitors



Latest PM2.5 NowCast AQI: 5 at 11/13/23 9pm HST

Latest PM2.5 NowCast AQI: 13 at 11/13/23 9pm HST

Princess Nāhi'ena'ena EI monitor



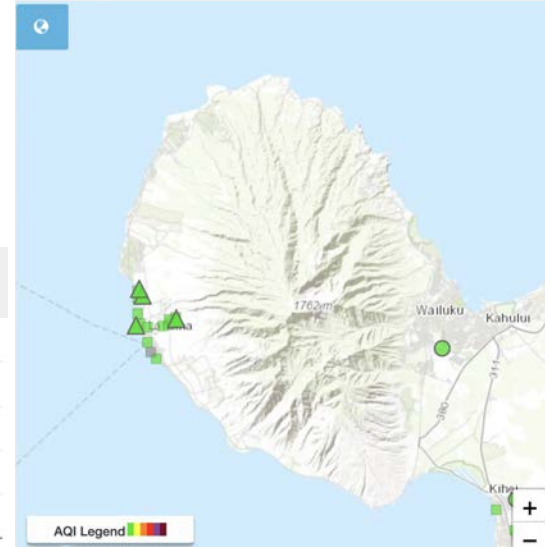
Latest PM2.5 NowCast AQI: 11 at 11/13/23 9pm HST

Lāhainā Inter monitor



test PM2.5 NowCast AQI: 10 at 11/13/23 9pm HST

<https://fire.airnow.gov>
Air quality readings, updated hourly





King Kamehameha III Elementary Maui temporary relocation site at Pulelehua

<https://go.hidoe.us/KKIII>

November 6, 2023

- [USACE awards \\$53.7 million contract to Pono Aina Management for temporary elementary school construction](#)

October 30, 2023

- [USACE presents temporary school construction plan to Hawai'i Finance Committee](#)

The screenshot shows a website page titled "King Kamehameha III Campus Updates". The page has a blue header with navigation links: Home, Parents and Families, Staff, KKIII, How to Help, Contact, HI-EMA, and Hawai'i State DOE. Below the header, there are two main sections: "US Army Corps of Engineers Honolulu District Website" and "USACE Hawai'i Wildfires Response". The main content area contains text about the school's relocation and construction, along with a list of updates dated November 6, 2023, October 30, 2023, October 11, 2023, and September 26, 2023. A satellite map of the construction site is visible on the right side of the page.



Community contributions

Examples of contributions

- HIDOE and an anonymous donor funded \$1,000 DonorsChoose gift codes for approximately 1,600 Lāhainā and Maui teachers as they returned from fall break to support classroom learning.
- The Bezos Family Foundation and The J. Willard and Alice S. Marriott Foundation have funded school meals for all Lāhainā students through the end of the school year.
- An art auction featuring artwork by Lāhaināluna students and their teacher will benefit the Lāhainā community: go.hidoe.us/3svnvsb
- HIDOE partnered with Public Schools of Hawai'i Foundation to steward \$500,000+ in donations to benefit Lāhainā schools.



Above: Lāhainā Intermediate cafeteria display with cards and positive messages.

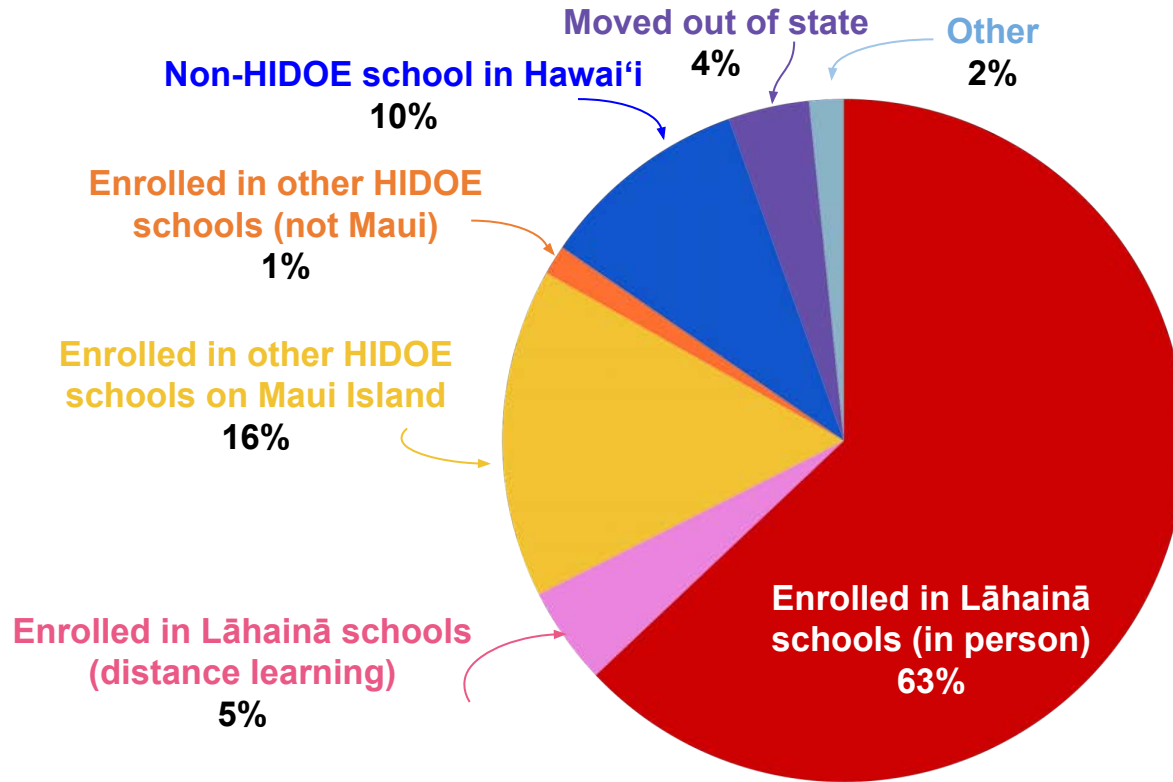


Right: Art by Lāhaināluna senior Mekayla Bandy that will be auctioned



Status of Students Pre-registered for Lāhainā Schools

Based on official student enrollment, Nov. 15, 2023







n=3,001 students
pre-registered



Lāhainā Complex School Reopening Plans

Lāhainā schools' student enrollment

	Current school enrollment including Distance Learning (DL) as of 11/15/2023	Students who have attended in person or DL	Students indicating plans to transfer out or join DL	Pre-fire enrollment
 Lāhaināluna High	856	851	0	1,012
 Lāhainā Intermediate	403	379	11	658
 Princess Nāhi'ena'ena Elem	487	430	38	707
 King Kamehameha III Elem	282	260	6	624



Lāhaināluna High homecoming varsity football game on October 21, 2023





Lāhainā Schools' Experiences

- Gary Kanamori, Princess Nāhi'ena'ena Elementary School Principal
- Kaleka Manoha, Princess Nāhi'ena'ena Elementary Teacher/Curriculum Coordinator and Parent
- Mikaila Acosta, Lāhaināluna High School Senior
- Lavinia (Nia) Tuavao-Tupou, Lāhaināluna High School Senior



SECTION

B

Awards & Recognitions

For Students, Employees and/or
Schools



Workforce Development Council Workforce Hero Superintendent Keith Hayashi

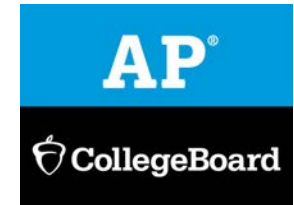
The award recognizes an individual with a career-long commitment to advocating for local career pathways and preparing individuals for viable employment and career advancement in Hawai'i.





National Awards & Recognitions

- **Bryan Silver, Kalani High**
Science and Career and Technical Education Teacher
2023-24 Teacher Excellence Award,
International Technology and Engineering Educators Association
- **Ayada Bonilla, Office of Student Support Services**
Educational Specialist, School-Based Behavioral Health
2023 School Mental Health Champion Award,
National Center for School Mental Health
- **2023 College Board AP School Honor Roll**
Kaiser, Kalāheo, Kalani, Mililani, Radford and
Roosevelt High Schools





Lāhainā Intermediate



Princess Nāhi'ena'ena



Princess Nāhi'ena'ena



#MAUISTRONG



Lāhaināluna High



Lāhaināluna High



King Kamehameha III Elementary