


STATE OF HAWAII  
DEPARTMENT OF EDUCATION  
KA 'OIHANA HO'O NA'AUAO  
P.O. BOX 2360  
HONOLULU, HAWAII 96804

OFFICE OF THE SUPERINTENDENT

December 15, 2022

TO: The Honorable Bruce D. Voss  
Chairperson, Board of Education

FROM: Keith T. Hayashi  
Superintendent 

SUBJECT: **Board Action on Department of Education's Plan and Timeline to Design, Get Approval for, and Implement the Kindergarten Entry Assessment ("KEA") for Kaiapuni (Hawaiian Language Immersion) Schools**

1. EXECUTIVE SUMMARY

- On October 6, 2022, the Hawai'i State Board of Education (Board) approved the Johns Hopkins University (JHU) Kindergarten Readiness Assessment as the Kindergarten Entry Assessment (KEA) for English medium schools.
- On October 6, 2022, the Board instructed that the Hawai'i State Department of Education (Department) to present to the Board for consideration, by the Board's December 15, 2022 meeting:
  - A proposed timeline to design, get Board approval for, and implement a KEA with input from experts and stakeholders that is appropriate, useful, and meaningful to be used in all Kaiapuni schools and programs statewide; and
  - Provide estimates of the resources and actions needed to accomplish a KEA for Kaiapuni schools and programs.
- On November 1, 2022, the Department convened with the Kaiapuni community and external stakeholders to discuss the implications of developing a Kaiapuni KEA.
- Taking the Kaiapuni community's stakeholder feedback into consideration, the Department recommends the development of a Kaiapuni KEA in 'Ōlelo Hawai'i that aligns with the approved English language KEA, with the addition of a sixth domain to reflect Hawaiian language, culture, and community that are critical to the Kaiapuni educational mission.

- This assessment development will impact 350 to 400 Kaiapuni kindergarten students across 24 kindergarten classrooms in eleven (11) Department Kaiapuni schools, with the six (6) charter schools having the option to also use the Kaiapuni KEA.
- The Department advises that this recommendation is estimated to cost \$716,335 over three years. There may be an additional estimated cost of \$532,000 and extended timeframe if it is found that a new online platform must be developed to administer this assessment.
- To develop the Kaiapuni KEA, the Department will partner with the University of Hawai'i (UH) which was the partner in development of the Kaiapuni Assessment of Educational Outcomes (KĀ'EO) assessment.
- The Department recommends development of a KEA for Kaiapuni schools and programs that would be administered beginning July 1, 2026. Field testing of assessment items for initial reliability and validity would begin on July 1, 2024. Operational field testing for scoring and standard setting would begin on July 1, 2025. The Operational full implementation testing would begin on July 1, 2026.

## 2. RECOMMENDATION

The Department recommends the development of a Kaiapuni KEA in 'Ōlelo Hawai'i that aligns with the adopted English language KEA, with the addition of a sixth domain to reflect Hawaiian language, culture, and community that are critical to the Kaiapuni educational mission. The Kaiapuni KEA will be administered for Kaiapuni kindergarten students statewide, beginning July 1, 2026.

This action would serve as the Board's approval for KEA for Kaiapuni schools and programs.

## 3. RECOMMENDED EFFECTIVE DATE

The Board's approval of the Department's plan to develop a Kaiapuni KEA would be effective immediately.

## 4. RECOMMENDED COMPLIANCE DATE (if different from the effective date)

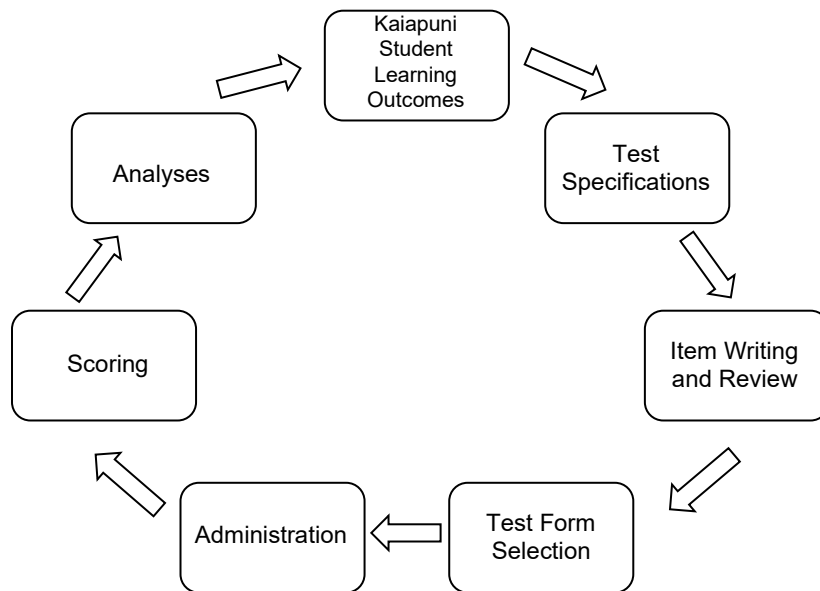
Hawai'i Revised Statutes (HRS) §302A-1165, which is effective on July 1, 2023, mandates that the Board adopt and the Department administer a "uniform, statewide assessment; provided that the assessment shall be conducted in English or Hawaiian" (among other characteristics of the assessment). Compliance date for administration of Kaiapuni KEA would be July 1, 2026.

## 5. DISCUSSION

- a. Conditions leading to the recommendation:

*Background.* HRS §302A-1165, as legislatively mandated in [Act 210, Session Laws of Hawai'i \(SLH\) 2021](#), requires the Department to implement a statewide KEA in the five domains of early childhood education: (a) Language and Literacy Development; (b) Cognition and General Knowledge; (c) Approaches to Learning; (d) Physical Well-Being and Motor Development; and (e) Social and Emotional Development. While the Department was able to locate and procure a quality, research-based tool developed by the JHU for English language schools, there does not currently exist a comparable tool in 'Ōlelo Hawai'i that reflects the Hawaiian cultural context of the Kaiapuni schools. When the Board adopted the JHU tool on October 6, 2022, it stipulated that this tool is adopted for the English medium schools only and that a parallel process would need to be developed for the Kaiapuni schools to provide the assessment in 'Ōlelo Hawai'i, in collaboration with the Kaiapuni community.

*Kaiapuni Schools Stakeholder Convening.* On November 1, 2022, the Office of Hawaiian Education (OHE) and the Office of Curriculum and Instructional Design (OCID) convened a day-long meeting with 14 Kumu Kaiapuni, representing six (6) of eleven (11) Department schools and four (4) of six (6) charter schools. Board member Kili Namau'u was in attendance on behalf of the Board of Education. Also present were various external stakeholders representing other Kaiapuni community members, including the University of Hawai'i at Mānoa, the University of Hawai'i at Hilo, 'Aha Pūnana Leo, and 'Aha Kauleo. Other Department representatives included the Office of Strategy, Innovation and Performance. During this meeting, Dr. Lauren Padesky, Early Childhood Educational Specialist, on behalf of the Department, presented the JHU KEA tool and its implementation process in English medium schools, as well as how the tool assesses the five domains of early childhood education (referenced above). Three external stakeholders also presented regarding the KEA. Dr. Pōhai Kūkea Shultz of the University of Hawai'i presented about the previous process implemented to develop the KĀ'EO assessment and recommended that the Department apply a similar approach in developing a Kaiapuni KEA.



Ka‘iulani Laehā, the CEO of ‘Aha Pūnana Leo, presented regarding the Curriculum Based Measures (CBM) that are in use in Pūnana Leo preschools and how those might inform or support Kaiapuni KEA development. Dr. Kauanoe Kamanā of Ke Kula ‘O Nāwahīokalani‘ōpu‘u Charter School and the University of Hawai‘i at Hilo also presented regarding CBM already in use in the Nāwahī preschool and kindergarten that would be appropriate for informing the Kaiapuni KEA.

During the remainder of the meeting, the Kumu Kaiapuni reflected on their current practices regarding assessment of the domains of early childhood at kindergarten entry. It was noted that the kumu are confident that they teach and assess across the five domains in a variety of ways while also uplifting ‘Ōlelo Hawai‘i and promoting fluency in all keiki. Concerns were also shared regarding ensuring that the KEA tool would truly reflect the mission and vision of Kaiapuni schools for language revitalization, while accurately assessing children at kindergarten entry who may not yet know any ‘Ōlelo Hawai‘i.

The following were also recommendations noted from the day from co-created charts, as well as discussions, that occurred throughout the November 1st stakeholder convening. Recommendations from Kaiapuni stakeholders beyond this meeting are also included, such as those made by ‘Aha Kauleo. Across the Kaiapuni stakeholders reflected in this report, the

common thread was the desire to defer implementation of any KEA until the most appropriate modality is developed within the Kaiapuni context.

- **Legislation and Waiver**  
Recommends temporary waivers, pursued through School Community Councils (SCC), from implementation of any KEA in SY 2023-2024 and also recommends legislative action for a permanent exemption from the KEA requirement in Act 210 (2021).
- **Establishment of Purpose**  
Recommends uplifting the purpose of Kaiapuni - to revitalize 'Ōlelo Hawai'i while supporting *all* haumāna in Hawai'i schools.
- **Ana Mākaukau**  
Recommends extending time, space, and support to the development, alignment, and measurement of mākaukau that reflect the established Kaiapuni purpose.
- **Test Creation**  
Recommends acknowledgement of the intensive effort required to develop assessments in 'Ōlelo Hawai'i and requests continuing support and time for this effort to develop the most appropriate KEA assessment.
- **Implementation**  
Recommends co-creation of KEA implementation timelines that account for the costliness of developing curricula and assessments in 'Ōlelo Hawai'i, particularly for kumu who support these efforts.
- **Support**  
Recommends ongoing support, including professional development, that recognizes the unique linguistic and cultural accomplishments in Kaiapuni classrooms, and builds kumu skillfulness in supporting language development.
- **Data Use**  
Recommends judicious use of data of all kinds and requests acknowledgement of, and mitigation of, the potential harms that can come from misuse and misrepresentation with data about keiki.

*Department Recommendation.* The Department recommends that the Department, in partnership with the University of Hawai'i (UH), develop a Kaiapuni KEA in 'Ōlelo Hawai'i that aligns with the adopted English language KEA and adds a sixth domain to reflect Hawaiian language, culture, and community that are critical to the Kaiapuni educational mission. Given the previous experience of successfully developing, pilot testing, validating, and implementing the KĀ'EO assessment, the Department is confident that the Department-UH partnership to develop a valid, reliable Kaiapuni KEA is in the best interests of the Kaiapuni community, particularly the kindergarten students.

In order to accomplish this recommendation, the Department recommends an effective implementation and compliance date of July 1, 2026, for all Kaiapuni schools, with field testing in the Fall of 2024, operational field testing in the Fall of 2025, and the operational testing for full implementation in the Fall of 2026.

The following timeline outlines the assessment development and implementation process:

Recommended Timeline for Kaiapuni KEA Development		
<p>This timeline is informed by the previous process undertaken in collaboration with the University of Hawai'i at Manoa, including Dr. Pōhai Kūkea Shultz, to develop the KĀ'EO assessment. OCID, OHE and OSIP will collaborate to move this work forward in partnership with the University of Hawai'i at Mānoa. Kaiapuni stakeholders—Kaiapuni teachers and 'Ōlelo Hawai'i experts—will play a critical role in the development of the KEA, including but not limited to participation in standard development, item writing, and standard setting. The Department will explore possible options for an online platform for the Kaiapuni KEA.</p>		
PRE-DEVELOPMENT PREPARATIONS		
Line	Timeframe	Task
1	December 2022 - February 2023	<ul style="list-style-type: none"> <li>● Project manage, develop the budget, and convene the workgroup (membership detailed below) to present timeline and process               <ul style="list-style-type: none"> <li>○ <i>Primary Stakeholders:</i> Kaiapuni kindergarten teachers, Kaiapuni principals, 'Aha Kauleo representative(s)</li> <li>○ <i>External Advisors:</i> UH Manoa and UH Hilo representative(s), 'Aha Pūnana Leo representative(s)</li> <li>○ <i>Department:</i> OHE representatives, OCID representatives, OSIP representatives</li> </ul> </li> <li>● Workgroup membership may evolve to include further representatives as the need arises throughout the assessment development process</li> <li>● Convene series of meetings with workgroup to develop Kaiapuni kindergarten entry standards               <ul style="list-style-type: none"> <li>○ Examine existing kindergarten Kaiapuni content area standards to determine entry-level expectations</li> </ul> </li> <li>● Complete any required partnership Memorandum of Understandings/Agreements, Amendment, and/or Procurement</li> </ul>

Recommended Timeline for Kaiapuni KEA Development		
		<ul style="list-style-type: none"> <li>Determine the online platform tool to be used for the Kaiapuni KEA and possible costs</li> </ul>
PHASE 1 Assessment/Online Tool Development		
Line	Timeframe	Task
2	March 2023	Development of Theory of Action and Purpose Statement
3	March - April 2023	Development of Kindergarten standards in Hawaiian
4	April - May 2023	Develop crosswalks: (a) Language and Literacy Development; (b) Cognition and General Knowledge; (c) Approaches to Learning; (d) Physical Well-Being and Motor Development; (e) Social and Emotional Development; and (f) Hawaiian Language, Culture, and Community
5	June 2023	Develop test specifications/blueprint
6	June - September 2023	Facilitate item development and review
7	Ongoing	Collaborate with the determined online platform tool team
8	October - December 2023	Build final test form - field test
9	January - April 2023	Conduct User Acceptance Testing (UAT) of Hawaiian language assessment
10	January - March 2024	Develop test administration manual
11	Spring 2024	Collaborate with online platform team to conduct training
PHASE 2 Field Test		
Line	Timeframe	Task

Recommended Timeline for Kaiapuni KEA Development		
12	August - September 2024	Administer field test <i>Initial data for reliability and validity will be collected but scores cannot be used for reporting and school level decision making</i>
13	September - October 2024	Conduct analysis and item review
14	November - December 2024	Conduct cognitive interviews
15	January - February 2025	Develop technical report
16	March 2025	Facilitate standard to standard alignment study
17	Ongoing	Develop additional items as needed
18	April 2025	Build final test form - operational field test
19	April - June 2025	Conduct User Acceptance Testing (UAT)
20	Spring 2025	Collaborate with Online Platform Team to conduct training as needed
21	Ongoing	Collaborate with Online Platform Team on project management as needed
PHASE 3 Operational Field Test		
Line	Timeframe	Task
22	August - September 2025	Administer operational field test <i>Data from this assessment will be scored and reported once standard setting is complete.</i>
23	September - October 2025	Conduct analysis and item review
24	November - December 2025	Develop technical report



Recommended Timeline for Kaiapuni KEA Development		
25	December 2025 - January 2026	Facilitate standard setting and item to standard alignment review
26	February 2026	Reporting of results
27	Ongoing	Collaborate with Online Platform Team
28	Spring 2026	Collaborate with Online Platform Team to conduct training as needed

ESTIMATED BUDGET	
Year 1 (Fiscal Year 24)	KEA Assessment - \$252,995 Teacher Substitute/Stipend - \$17,727 (24 kumu @ 4 days)
Year 2 (FY 25)	KEA Assessment - \$215,381 Teacher Substitute/Stipend - \$17,727 (24 kumu @ 4 days)
Year 3 (FY 26)	KEA Assessment - \$192,108 Teacher Substitute/Stipend - \$17,727 (24 kumu @ 4 days)
TOTAL ESTIMATED COST	\$713,665 There may be an additional cost of \$532,000 if it is found that a new online platform must be developed to administer this assessment.

b. Previous action of the Board and Committee(s) on the same or similar matter:

On [October 6, 2022](#), the Student Achievement Committee, chaired by Board member Kili Namau'u, made the following Actions regarding the KEA:

- Action: Motion to adopt the Johns Hopkins University Kindergarten Readiness Assessment as the statewide kindergarten entry assessment to be used in English medium schools as required by Hawai'i Revised Statutes Section 302A-1165 (Moriarty/Barcarse). The motion carried unanimously with all members present voting aye.
- Action: Motion to instruct the Department to present to the Board for consideration, by the Board's December 15, 2022 meeting, (1) a proposed timeline to design, get Board approval for, and implement a kindergarten entry assessment with input from experts and stakeholders that is

appropriate, useful, and meaningful to be used in all Kaiapuni schools statewide; and (2) provide estimates of the resources and actions needed to accomplish this (Moriarty/Barcarse). The motion carried unanimously with all members present voting aye.

On [October 6, 2022](#), at a Special Meeting of the Board overseen by Vice Chairperson Kaimana Barcarse, the following Actions regarding the KEA were taken:

- Action: Motion to (1) Adopt the Johns Hopkins University Kindergarten Readiness Assessment as the statewide kindergarten entry assessment to be used in English medium schools as required by Hawai'i Revised Statutes Section 302A-1165; and (2) Instruct the Department to present to the Board for consideration, by the Board's December 15, 2022 meeting: (a) A proposed timeline to design, get Board approval for, and implement a kindergarten entry assessment with input from experts and stakeholders that is appropriate, useful, and meaningful to be used in all Kaiapuni schools statewide; and (b) Provide estimates of the resources and actions needed to accomplish this (Student Achievement Committee/no second required). The motion carried unanimously with all members present voting aye.

c. Other policies affected:

[\*Board Policy 203-2: Developmentally-Appropriate Teaching Practices\*](#)

Board Policy 203-2 specifies that “The Department of Education shall provide all teachers and school administrators with research-based information about how all children develop and learn” and that “teaching and learning activities in all primary grades shall meet each child’s developmental readiness within Department of Education approved guidelines.” The Department-UH development of a Kaiapuni KEA in ‘Ōlelo Hawai‘i will provide the Kaiapuni teachers, administrators, and the Department with critical information about children’s developmental strengths and needs in the Kaiapuni context, which will serve to support teachers in providing more developmentally appropriate and specific instruction for each child to more fully realize Board Policy 203-2. Developmentally appropriate teaching practices extend to the Kaiapuni community, and an assessment in the language of instruction for Kaiapuni kindergarten is necessary to ensure fuller access and inclusivity regarding this policy.

[\*Board Policy 105-8: Ka Papahana Kaiapuni\*](#)

Board Policy 105-8 specifies the provision of “Hawaiian bicultural and bilingual education” through Ka Papahana Kaiapuni. [Act 210, Session Laws of Hawaii \(SLH\) 2021](#), specifies that the kindergarten entry assessment shall be

administered in either English or Hawaiian. Identification of a tool to be used for Kaiapuni students can advance Board Policy 105-8's specification that the "...program's effectiveness requires the development and proper administration of appropriate formative and summative assessment tools. These program evaluation tools should be in alignment with the State's Kaiapuni curriculum and measure student growth and proficiency with the goal of preparing students for success in college, career, and community."

d. Arguments in support of the recommendation:

At the November 1, 2022, meeting with Kaiapuni stakeholders, the Department sought feedback regarding whether a trans-adaptation of an existing KEA tool or an development of a Kaiapuni KEA would be a more appropriate choice for the Kaiapuni kindergarten classes. The Kumu Kaiapuni, as well as external stakeholders representing other Kaiapuni community members, engaged in collaborative conversations about the best course of action for a KEA. Stakeholders recommended the development of a Kaiapuni KEA, as opposed to directly trans-adapting an existing tool, because doing so would more accurately reflect the unique cultural context of the Kaiapuni schools and better reflect the mākaukau (*competencies*) already assessed during kindergarten. They also advised that development of a Kaiapuni KEA would better reflect the language development focus of the kindergarten context, and potentially provide the opportunity for designing items that acknowledge that many Kaiapuni kindergarteners do not yet know 'Ōlelo Hawai'i. Because the Board has already adopted the English medium KEA, the Kaiapuni will have the opportunity to design an assessment that aligns with the English medium expectations, but without inappropriately adapting items that might not make sense for the Kaiapuni context. Summarily, due to the non-existence of educational resources in 'Ōlelo Hawai'i from outside vendors, the most applicable course of action is to develop an assessment in partnership with the University of Hawai'i.

e. Arguments against the recommendation:

During the November 1, 2022 meeting with Kaiapuni stakeholders, there were also arguments raised against the implementation of any KEA in the Kaiapuni context. Of particular concern was the possibility that 'ohana may be disinclined to enroll their children in Kaiapuni if an entry assessment would be administered. Because many students enter Kaiapuni kindergarten without proficiency in 'Ōlelo Hawai'i, their language and literacy scores could potentially be lower compared with their peers in English medium schools, contributing to an unfounded impression that Hawaiian immersion preschools and kindergartens are less effective than English medium counterparts. Stakeholders emphasized that the Department would need to be very judicious

in its data-sharing efforts in order to prevent misinformation about the quality of a Kaiapuni education.

There was also concern about the burden that Kumu Kaiapuni would carry in the development of the assessment. Due to the limited number of speakers of ‘Ōlelo Hawai‘i, existing Kumu Kaiapuni would be asked to share their linguistic, cultural, and pedagogical expertise in the test development process. Combined with the fact that many Kaiapuni schools already experience teacher shortages, it was advised that the Department remain conscious of this burden and be vigilant about avoiding undue work loads for the Kumu Kaiapuni.

As a part of their individual presentations, Dr. Kauanoē Kamanā and Ka‘iulani Laehā each expressed their belief that the Kaiapuni schools should be exempt entirely from a KEA.

f. Other agencies or departments of the State of Hawai‘i involved in the action:

This action item has been developed with collaboration, input and feedback from the following stakeholder groups beyond the Department:

- Kumu Kaiapuni from 4 Kaiapuni Charter Schools (teachers/administrators)
- University of Hawai‘i at Mānoa
- University of Hawai‘i at Hilo
- ‘Aha Pūnana Leo
- ‘Aha Kauleo

The following Department offices were involved in the development of this action item:

Kaiapuni KEA Action Item Department Contributors	
Stakeholder Groups	<ul style="list-style-type: none"> <li>● Kumu Kaiapuni from 6 Department Kaiapuni schools and programs (teachers/administrators)</li> </ul>
Office of Hawaiian Education	<ul style="list-style-type: none"> <li>● Kau‘i Sang, Hawaiian Education Director</li> <li>● Aulia Austin, Educational Specialist</li> <li>● Pono Fernandez, Educational Specialist</li> <li>● Anela Iwane, Educational Specialist</li> <li>● Dr. Dana Tanigawa, Educational Specialist</li> </ul>
Office of Curriculum & Instructional Design	<ul style="list-style-type: none"> <li>● Dr. Teri Ushijima, Interim Assistant Superintendent</li> </ul>

Kaiapuni KEA Action Item Department Contributors	
	<ul style="list-style-type: none"> <li>• Esther Tokihiro, Interim Director Curriculum Innovation Branch</li> <li>• Dr. Lauren Padesky, Educational Specialist</li> </ul>
Office of Strategy, Innovation, & Performance	<ul style="list-style-type: none"> <li>• Kelsie Pualoa, Test Development Specialist</li> </ul>
Office of Student Support Services	<ul style="list-style-type: none"> <li>• Dr. Amy Ruhaak, Educational Specialist</li> </ul>

- g. Possible reaction of the public, professional organizations, unions, DOE staff, and/or others to the recommendations:

In September 2022, the Department informed HSTA of the KEA requirement. In November 2022, additional information was shared with HSTA, and the HGEA was also provided a letter regarding the adoption and implementation of the KEA for the English medium schools. The Department will provide an updated letter to HSTA and HGEA regarding the development of the Kaiapuni KEA. The Department has informed the unions that we are available for questions that may arise with the planning, development, and implementation of the KEA.

On [October 6, 2022](#), multiple members of the public provided oral and/or [written testimony](#) regarding the adoption of a KEA, especially with an emphasis on ensuring that the integrity of Kaiapuni’s mission to revitalize ‘Ōlelo Hawai‘i through education not be compromised by the imposition of an English language KEA. The decision to develop the Kaiapuni KEA in ‘Ōlelo Hawai‘i is responsive to the testimony and some of the testifiers were also included in the November meeting. The Department is committed to uplifting and maintaining the Kaiapuni mission and providing the kindergartners at Kaiapuni with a high quality educational experience through ‘Ōlelo Hawai‘i.

On October 13, 2022, Dr. Lauren Padesky presented on behalf of the Department regarding the adoption of the KEA for English medium schools at the Early Learning Board (ELB) meeting. At this meeting, questions arose regarding the plan for the Kaiapuni community schools, and concerns were expressed about ensuring that the adopted KEA did not misrepresent Hawaiian language preschools, as well as concerns about testing in the language of instruction. As the KEA is developed, there will be continued discussions with the ELB and constituents prior to full implementation and reporting of results.

h. Educational implications:

Per [Board Policy 105-8: Ka Papahana Kaiapuni](#), the Kaiapuni schools require appropriate assessment tools that support their curriculum and meet their educational goals. Furthermore, [Act 210, SLH 2021](#) requires that the KEA be available in either English or Hawaiian. However, it cannot be assumed that a North American, English assessment can be directly translated into 'Ōlelo Hawai'i or culturally reflect the Kaiapuni context. This necessarily implies that an appropriate Kaiapuni assessment must be developed in order to meet Kaiapuni educational goals.

With the creation of an appropriate KEA, the Kumu Kaiapuni will be able to equitably access developmental information about their students across the five domains of early childhood and the Hawaiian cultural and linguistic domain. This is critical not only for creating assessment equity and access across the English medium and the Kaiapuni schools, but also for ensuring that the Kaiapuni haumāna are measured against standards that reflect their cultural and linguistic contexts. The Department emphasizes that the Kaiapuni educational community must be invested in order to create appropriate materials in 'Ōlelo Hawai'i, and that this investment demonstrates our commitment to a dual-language educational system.

i. Personnel implications:

Because the Kaiapuni KEA must be developed, coupled with the limited number of speakers of 'Ōlelo Hawai'i, there are going to be impacts on the Kaiapuni personnel. The Department anticipates the participation of 24 Kumu Kaiapuni from January 2023 through approximately the Spring of 2025 and cost for substitute teacher and/or stipend pay are incorporated within the cost estimates.

j. Facilities implications:

None.

k. Financial implications:

The Department advises that the total estimated cost for the development of the Kaiapuni KEA tool itself will be approximately \$660,484 as described in *Table 1 - Recommended Timeline for Kaiapuni KEA Development*. There may be additional costs depending on the outcome of the determination of the online platform tool.

The Department also anticipates substitute and/or stipend pay for the 24 Kumu Kaiapuni involved in assessment development that is estimated to cost \$53,181.

In total, the Department estimates a total cost of \$713,665. There may be an additional cost of \$532,000 and extended timeline if it is found that a new online platform must be developed to administer this assessment.

The Department will be seeking additional funding through the 2023-25 fiscal biennium general fund budget request.

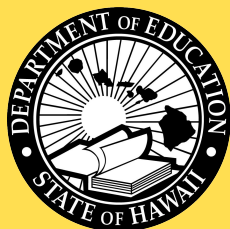
6. OTHER SUPPLEMENTARY RECOMMENDATIONS

None.

KTH:tu/lbp

Attachment: Attachment A - Board Action on Department of Education's timeline to design, get approval, and implement KEA for Kaiapuni schools

c: Office of Curriculum and Instructional Design



OFFICE OF

# Curriculum & Instructional Design

## Board Action on Department of Education's Plan and Timeline to Design, Get Approval for, and Implement the Kindergarten Entry Assessment ("KEA") for Kaiapuni (Hawaiian Language Immersion) Schools

**Teri Ushijima, Ed.D.**

*Interim Assistant Superintendent, Office of Curriculum and Instructional Design*

December 15, 2022





# Department Recommendations

## Development of **Kaiapuni KEA** in 'Ōlelo Hawai'i

- Impact:
  - 350-400 Kindergarteners per Year
  - 24 Kindergarten Classrooms per Year
  - 11 Department Schools
  - 6 Charter Schools
  
- Targeted Compliance Date:
  - July 1, 2026
  
- Estimated Total Cost: \$713,665 - \$1,245,665



# November 1, 2022 Kaiapuni Stakeholders Meeting

Stakeholders represented included:

- 14 Kumu Kaiapuni
  - 6 of 11 Kaiapuni Department Schools
  - 4 of 6 Kaiapuni Charter Schools
- Board of Education - Board member Kili Namau‘u
- University of Hawai‘i at Mānoa
- University of Hawai‘i at Hilo
- ‘Aha Pūnana Leo
- ‘Aha Kauleo
  
- Recommendation:
  - Development of **Kaiapuni KEA**



# Recommended Timeline for Kaiapuni KEA Development

Dec 2022 - Feb 2023	Mar 2023 - Jun 2024	Jul 2024 - Jun 2025	Jul 2025 - Jun 2026	Jul 2026- Jun 2027
<b>Pre-Development</b>	<b>Phase 1: Assessment Tool Development</b>	<b>Phase 2: Field Test</b>	<b>Phase 3: Operational Field Test</b>	<b>Full Implementation</b>
Project Management	Develop Standards Develop Blueprint	All Kaiapuni students are administered the Field Test	All Kaiapuni students are administered the Operational Field Test	All Kaiapuni students are administered the Operational Test
Budget Development	Develop Test Items	Results are not for reporting purposes	Student results are reported after standards setting is conducted	Development is completed
Initiate Workgroups				
Determine Online Platform				

*\*Depending on the determination of the online platform, the timeline may change.*



## (b) Cost Estimates

**Total Estimated Cost**  
**\$713,665 - \$1,245,665\***

<b>Kaiapuni KEA Cost Areas</b>	<b>Cost Estimates</b>
Kaiapuni KEA Development	\$660,484
Participant Teacher Subs/Stipends	\$53,181
Cost Estimate for Online Platform Tool*	\$532,000*

\*The higher end of the estimated cost range includes an additional \$532,000 if an online tool needs to be developed.