



STATE OF HAWAII
DEPARTMENT OF EDUCATION
P.O. BOX 2360
HONOLULU, HAWAII 96804

OFFICE OF THE SUPERINTENDENT

March 7, 2017

TO: The Honorable Margaret Cox
Chairperson, Student Achievement Committee

FROM:  Kathryn S. Matayoshi
Superintendent

SUBJECT: **Update on the Office of Hawaiian Education's Implementation Planning for Board Policy E-3 Nā Hopena A'o, 105-7 Hawaiian Education (formerly Board Policy 2104), and 105-8 Ka Papahana Kaiapuni (formerly Board Policy 2105), Including Hawaiian Language Arts Standards**

1. DESCRIPTION

Update on the Office of Hawaiian Education's Implementation Planning for Board Policy E-3 Nā Hopena A'o, 105-7 Hawaiian Education (formerly Board Policy 2104), and 105-8 Ka Papahana Kaiapuni (formerly Board Policy 2105), Including Hawaiian Language Arts Standards.

2. UPDATE

Director Dawn "Kauai" Sang of the Office of Hawaiian Education will provide the Board of Education an update.

KSM:lh
Attachment

Office of Hawaiian Education

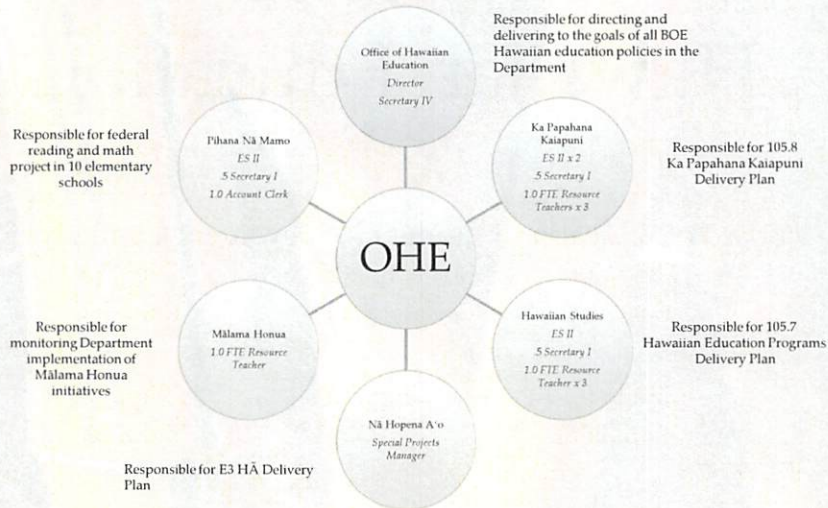
Board of Education | Student Achievement Committee
March 7, 2017

BOE Update on Update on Implementation and Planning for Board Policy
E-3 Nā Hopena A'o, 105-7 Hawaiian Education (formerly Board Policy 2104),
and 105-8 Ka Papahana Kaiapuni (formerly Board Policy 2105),
including Hawaiian Language Arts Standards Development

Today's Presentation

- Provide a progress report on the OHE Delivery Plan
- Share Hawaiian Language Arts Standards development project in preparation for upcoming BOE action
- Discuss next steps for Hawaiian education as related to BOE policy expectations

OHE Staff: Who Are We



Hā Delivery Plan: December 2015

Hā Based Community
Engagement Framework

Hā Based Leadership (Teacher
and Administrator) Training
and Evaluation System

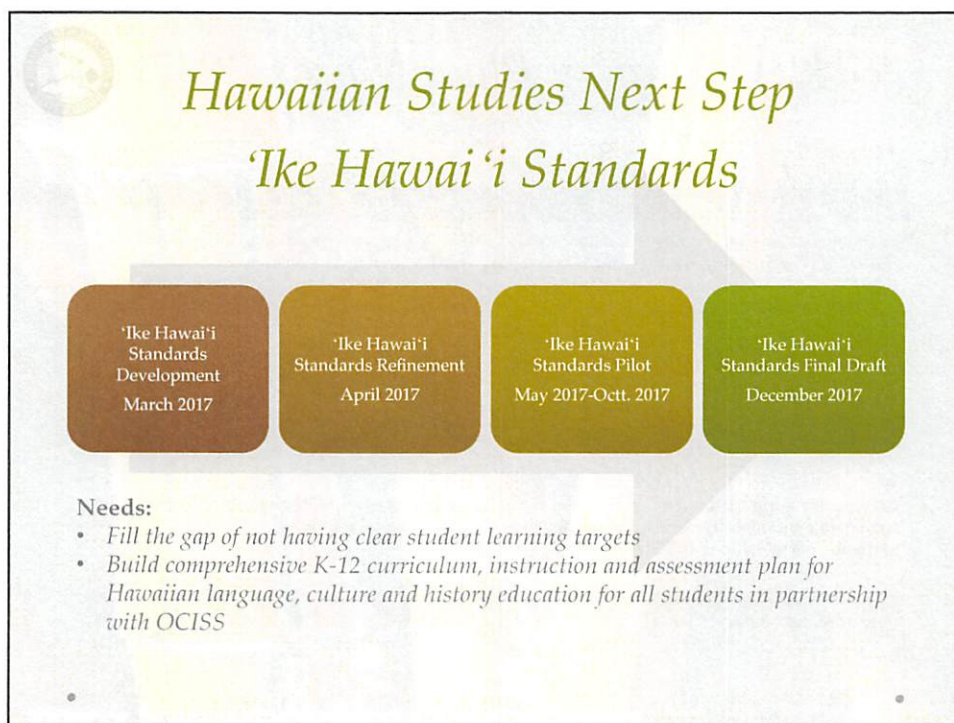
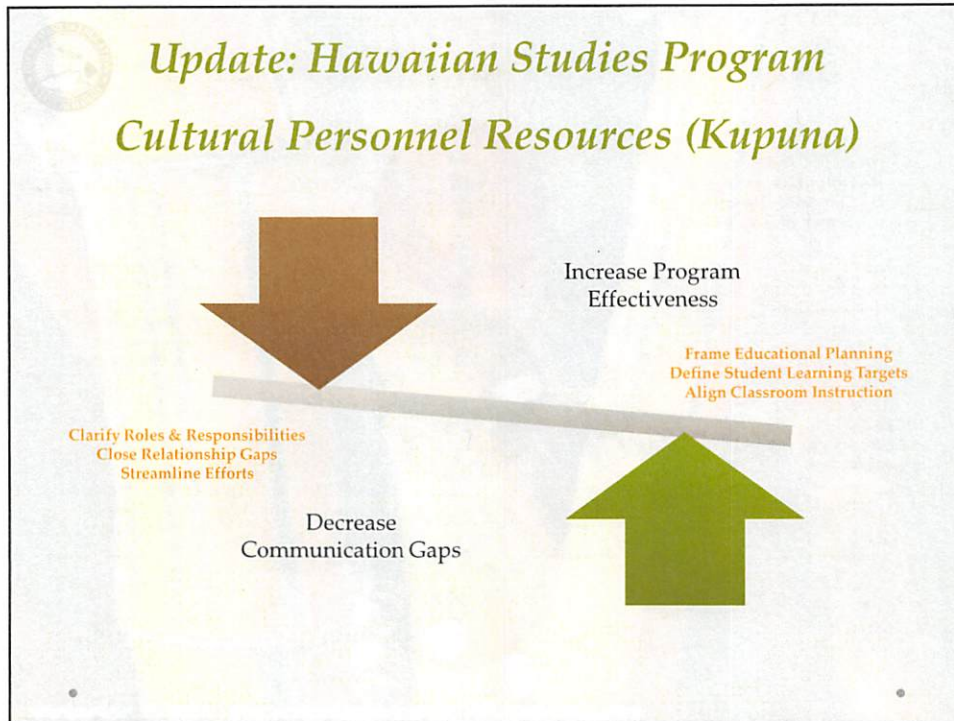
HIDOE Systems Alignment to
Hā

HĀ Delivery Plan: March 2017



HĀ Delivery Plan: March 2017

Opportunities	Challenges
High level of interest and buy-in: stakeholders can see the benefit and possibility for HĀ to bring coherency, desire for culture based ed supports, inspired by connection to Hawai'i	Shifting public education; Ambiguity of relationship between Governor's Plan, State Strategic Plan and ESSA; Untimely shifting of state level HIDOE leadership
Strong plan with clear next steps	Resources barriers such as no allocated state funding for HĀ project staff and/or initiatives
High quality, innovative design grounded in community, culture, and leadership	Schools overwhelmed, lack of time for teachers
Community support: aligning work to the HĀ framework and identifying ways to engage in authentic partnership with HIDOE	System barriers to implementing culture, 'āina, project based education
Honoring of process and intention of the HĀ outcomes; circular and cyclical	Holding on to prevailing narratives vs. acknowledging shifts to build new narratives





105.7 Hawaiian Education Programs

Opportunities

- Revisiting purpose of Hawaiian Studies Program Cultural Personnel Resource (HSP CPR) Program
- Beginning steps to broaden Hawaiian education integration beyond the K-6 learning environment

Challenges

- Hawaiian Studies Educational Specialist vacancy since December 2015
- Needs Assessment revealed
 - Limited value for HSP CPR Program
- Misunderstandings about Departmental role and accountability for Hawaiian education



Kaiapuni 'Ōlelo Hawai'i Educational Infrastructure

**Hawaiian Language Arts
standards (HLA)**

**Hawaiian Language Oral
Proficiency Scale and
Assessment**

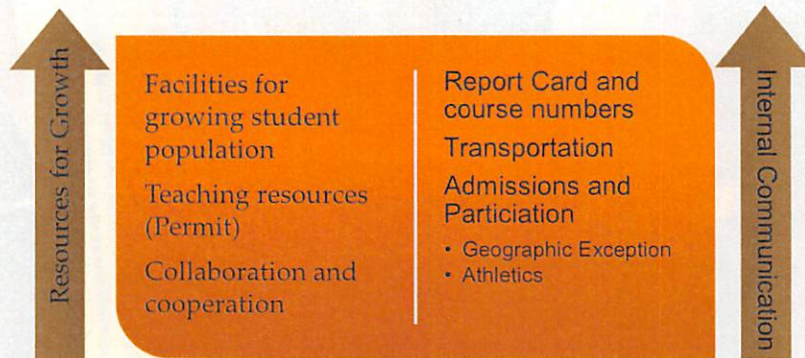
**Professional
Development**

Curriculum on Mauna Kea (UH
Hilo)
HAW 490 Language teaching
course and content assessment

Curriculum Development

Math & Science
Hawaiian language novels

Strengthen Kaiapuni Systemic Infrastructure



Hawaiian Language Arts Standards

Primary focus on oral language acquisition and comprehension

Need Addressed	Development Process
<ul style="list-style-type: none"> • Lack of learning targets • Monolingual learning progression for English versus bilingual in Hawaiian • Assessments to be constructed 	<ul style="list-style-type: none"> • Teacher as initial baseline expert • Universities as knowledge provider and co-editor • Grade level work samples • Targets formulated for bilingual learners

Timeline for development



OHE Update Summary

- OHE is moving forward to deliver to the priorities identified by stakeholders
- OHE is spending time to establish a foundation for Hawaiian education successfully integrate into the public education system
- OHE is building positive relationships along the way

Closing

- **How can you help?**
 - Hold OHE and the Department to task for policy implementation
 - Help close communication gaps by asking questions and building positive relationship with the work and the people involved
 - Hold value and advocate for Hawaiian education across the public education system

Mahalo!!!!!!