



STATE OF HAWAII
DEPARTMENT OF EDUCATION
P.O. BOX 2360
HONOLULU, HAWAII 96804

OFFICE OF THE SUPERINTENDENT

August 1, 2017

TO: The Honorable Margaret Cox
Chairperson, Student Achievement Committee

FROM: Dr. Christina M. Kishimoto
Superintendent

for 

SUBJECT: **Presentation on School Health Section and Services Provided by the Department of Education**

1. DESCRIPTION

The Department's Office of Curriculum, Instruction, and Student Support (OCISS) will share information regarding the recently formed School Health Section, including school-based health services provided to students, and the community partnerships being cultivated as part of a statewide system of school-based health care.

2. UPDATE

OCISS will provide a school-based health services update, including the expansion of the Hawaii Keiki program to all complex areas, school-based health centers, and coordinated school health partnerships.

CMK:lsr
Attachment

c: Office of Curriculum, Instruction and Student Support



NOTE: Edits have been made to Slides 5 and 16 to correct data. All changes shown in orange were not in the original material presented to the committee.



Presentation on School Health Section and Services Provided by the Department of Education

Board of Education
Student Achievement Committee
August 1, 2017



Agenda

- Preamble: Healthy students are better on all levels of academic achievement: academic performance, education behavior, cognitive skills and attitudes. All students deserve the opportunity to be healthy and successful (Centers for Disease Control and Prevention, 2014).
- School Health Services
 - Hawai'i Keiki Program
 - HealthOffice Anywhere (data software)
 - School-Based Health Centers
 - Partnerships: State and community agencies



Health and Academic Achievement

THE DRIVER:

DOE Strategic Plan 2017-2020

Vision

Hawai'i's students are educated, **healthy**, and joyful lifelong learners who contribute positively to our community and global society.

Goal 1: Student Success

Objective 2: Whole Child

Strategy 2b: Address students' **physical, mental, and behavioral health** through school programs and **partnerships** with families, community organizations, and government agencies that support students' **well-being**.



Health and Academic Achievement

Nā Hopena A'o (HĀ)

Strengthened Sense of Total Well-being:

I learn about and practice a **healthy lifestyle**
A sense of Total Well-being is demonstrated by making choices that improve the mind, body, heart and spirit. I am able to meet the demands of school and life while contributing to the well-being of family, 'āina, community and world.



Chronic Absenteeism

(Absent at least 15 days during the school year)

NOTE: Edits have been made to this slide to correct data. All changes shown in orange were not in the original material presented to the committee.

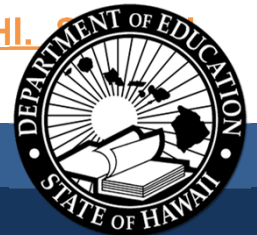
2016-17 School Year

~~All students statewide~~

~~20.05%~~ * 15.0%

~~33,709 students~~

*The official chronic absenteeism percentage for schools is reported through StriveHI. only includes students who were present at the school for a full school year.



Hypothesis

- Many of these students are chronically absent because their health needs are largely *not* met.

Theory of Action

- If chronic absenteeism is decreased...
- Then academic engagement and achievement will increase. *How?*
 - More students attending school regularly.
 - School-based health centers and health rooms providing direct health services to students (DOH PHNs, Hawai'i Keiki Nurses, School Health Assistants).
 - Standards-based health education curriculum being delivered, which helps students make better choices for their overall health and well-being.



HAWAI'I KEIKI

Healthy and Ready to Learn

UH Mānoa Nursing with Hawai'i Department of Education



www.hawaiiikeiki.com



Advanced Practice Registered Nurses (APRNs) Serving DOE Schools

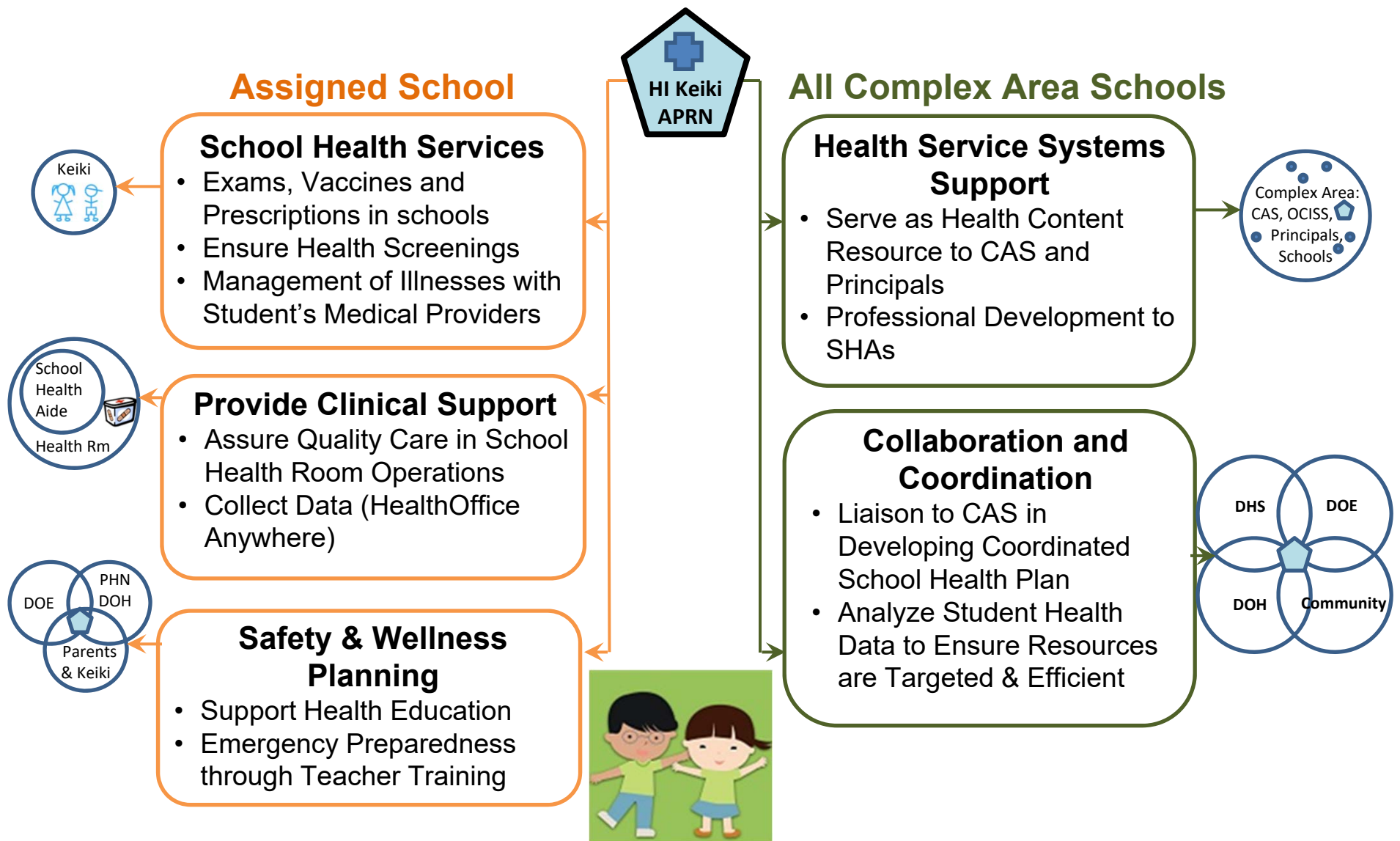
- Reduce health-related chronic absenteeism and time spent in health rooms.
- Enhance wellness in the school environment and community.
- Promote optimal student health through school-based health care.
 - Preventive health screening (vision, hearing, dental)
 - Manage acute illnesses and chronic health conditions
- Collaborate with community partners for coordinated school health programs and services.

OFFICE OF CURRICULUM, INSTRUCTION AND STUDENT SUPPORT

HawaiiPublicSchools.org

OCISS







Hawai'i Keiki

Healthy & Ready to Learn

UH Manoa Nursing with Hawaii Department of Education

Phase 3: Expansion to 8 New Complex Areas			
School Year	New APRNs	New Schools	New Keiki
2017-18	8	150	100,000+

Hawai'i Keiki expanding state-wide to all 15 Complex Areas for 2017-18 SY:

- Statewide public school system support: 256 schools, approximately 180,000 students
- APRNs: One assigned to each Complex Area (15), 5 additional at Nānākuli-Wai'anae CA schools, and 1 additional at Farrington High School, totaling 21 providing school-based health care services.

Support and consultation to OCISS School Health Section for:

- Expanding HealthOffice Anywhere® to all 256 schools
- Continued collaboration and development with community organizations





HealthOffice® Anywhere

Student Electronic Medical Record (EMR) Software for Schools

- Report Detailed Information About Every Student Encounter in Health Rooms
- Early Identification of Students Frequenting Health Rooms or Being Sent Home
- Provides school nurses easy access to SHA records for supervision purposes
- Physical Exam and Immunization Records never lost in transfer between schools

Pilot (2016-2017 School Year)

- 12 Schools with Hawai'i Keiki Nurse included in pilot, 16 SHA and Substitute SHAs
- 1,085 medical conditions logged on 928 students
- 26,594 visits to the health room and 1,216 medication events for 5,867 students
- Visit disposition: 85% returned to class; 15% sent home or remained in health room

Understanding and Intervening in Health-Related Chronic Absenteeism

- Enhanced monitoring of students with conditions and time spent in health rooms
- Improved follow-up after being sent home and tracking response to interventions



Hawai'i Keiki Collaborative Projects and Partnerships



Oral Health Screening and Dental Sealants:

Grant-funded project providing screening and dental sealants in collaboration with DOH and UH Mānoa School of Nursing and Dental Hygiene

Vision Screening and Eye Health Partnership:

Expanding vision screening in schools and school-based follow-up services (e.g., providing glasses) in partnerships with Project Vision Hawai'i, Vision To Learn, Lions Clubs, Vision Quest 20/20 and private foundation funders



Hawai'i Keiki

Collaborative Projects and Partnerships

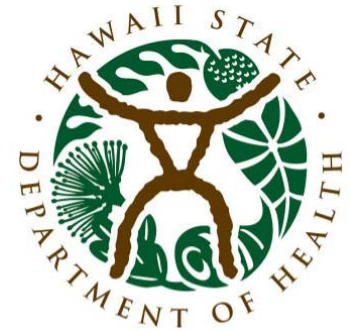


Coordinating Care with Health Care Providers and Organizations:

The Queen's Medical Center and Health System, Castle Medical Center, Kapi'olani Medical Center for Women and Children, Wilcox Medical Center, Kaua'i Medical Clinic, Federally Qualified Health Centers (FQHCs), American Academy of Pediatrics – Hawai'i Chapter, and National Association of Pediatric Nurse Practitioners



DOE ↔ DOH Partnership



- **Health Services to DOE Schools:**

- DOH Public Health Nurses (PHNs) assigned to all Complex Areas, providing oversight for all public and charter schools.
- They support the well-being of students, including management of their health conditions to increase attendance in schools.

- **Coordinated School Health Services:**

- DOH Public Health Nursing Branch meets monthly with DOE (School Health Section) and Hawai'i Keiki Program to coordinate school health services.

- **Communication:**

- DOH provides communication to DOE regarding health related information such as outbreaks (e.g., Hepatitis A, Mumps, etc.), Tuberculosis investigation, revisions to health requirements, etc.



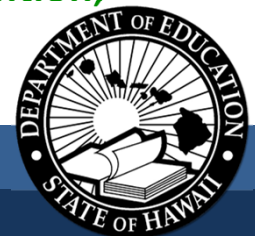
Waianae Coast Comprehensive Health Center

School-Based Health Center

Waianae High and Intermediate Schools



- Access: Primary care and behavioral health services are available to ALL students with parental/guardian consent.
- Staffing: 3 rotating APRN's, 1 clinical psychologist, 1 health educator, 2 clinic managers and one clinical director.
- Sustainability: Encounters are billed for. Most students are already WCCHC patients – SBHC is an extension of their medical home. A grant covers costs of patients we are unable to bill.
- Strengths: Community engagement, especially incorporating the voices of students; direct link to behavioral health; electronic health records with access to students' past medical history; coordination of care.
- Goal: Improve chronic absenteeism by providing primary care and behavioral health services when needed and allowing students to return to class.
- Ultimate goal: Improve health literacy of adolescents by focusing on prevention; health education; early intervention and risk reduction.



Chronic Absenteeism

Impact at schools 2016-17 SY

➤ Waiʻanae **High** School

- ~~46.41%~~ *42.0%
- ~~808 students (out of 1,741)~~

NOTE: Edits have been made to this slide to correct data. All changes shown in orange were not in the original material presented to the committee.

➤ Waiʻanae **Intermediate** School



- ~~48.77%~~ *40.0%
- ~~418 students (out of 857)~~

*The official chronic absenteeism percentage for schools is reported through StriveHI. StriveHI only includes students who were present at the school for a full school year.

❖ The following slide shows data collected which illustrates how school-based health centers at both of these schools are helping address the problem of chronic absenteeism.

WAIANAE COAST COMPREHENSIVE HEALTH CENTER
School Based Health Centers - August 1, 2016 - May 26, 2017



RESULTS: Aug 1, 2016 – May 26, 2017	 Waianae High School	 Waianae Intermediate School	Total
Students Requesting Medical Care	1435	1080	2515
Students Treated	1302 (91%)	990 (92%)	2292 (91%)
Students Returned to Class After Treatment	1267 (97%)	854 (86%)	2121 (93%)
Primary Care Diagnoses	<i>Sports and School Physicals; Acute conditions – e.g. ear infections; Strep throat; asthma exacerbation; urinary tract infection; menstrual cramps; rashes; diarrhea/vomiting; appendicitis; seizure Orthopedic conditions and injuries – e.g. sprains; strains; fractures; lacerations; abrasions; concussion.</i>	<i>Same as in WHS</i>	
Behavioral Health Visits Jan 9, 2017 - May 26, 2017	209	143	352
Behavioral Health Diagnoses	<i>Adjustment disorder; Depression; Anxiety; PTSD; Eating disorders</i>	<i>Same as in WHS</i>	

Sound Body, Thriving Mind, Promising Future

